

11305-07 **GEORGIA AVE**  
WHEATON, MD

**AVAILABLE**

**UNPLUGGED**  
RESTAURANT & SPORTS BAR

**PAUL KEE  
RESTAURANT  
AND  
LOUNGE**

**AVAILABLE**

**HR**  
RETAIL  
A MEMBER OF CHAINLINKS RETAIL ADVISORS

**TWO RETAIL SPACES AVAILABLE**

11305-07  
**GEORGIA AVE**  
WHEATON, MD



STONEYMILL SQUARE  
KOREAN KORNER  
♥CVS

GLENMONT S/C  
Staples  
♥CVS

LOEHMANN'S PLAZA  
DOLLAR TREE

Walgreens

NORTH BETHESDA T/C  
Harris Teeter

RANDOLPH HILLS S/C  
CORT

WHITE FLINT PLAZA  
ALDI  
PETSMART  
HomeGoods  
PGA TOUR  
SUPERSTORE

WHITE FLINT MALL  
(REDEVELOPMENT)

**11305-07 GEORGIA AVE**

♥CVS

SAFEMART

KEMP MILL S/C  
KELMOR KOSHER  
♥CVS

GROSVENOR PARK  
GROSVENOR MARKET

ANYTIME FITNESS

KENSINGTON S/C

KENSINGTON CROSSING

WESTFIELD WHEATON  
TARGET  
Giant  
macys  
COSTCO WHOLESALE  
JOANN  
LA FITNESS  
DICK'S SPORTING GOODS  
amc  
JCPenney  
PartyCity  
AMERICAN FREIGHT FURNITURE - MATTRESS  
DSW

M WHEATON  
3,510 AWP

BEST BUY

SHOPPES OF BURNT MILLS  
TRADER JOE'S

SAFEMART

SAFEMART

**MARKET AERIAL**



11305-07  
**GEORGIA AVE**  
WHEATON, MD



**GEORGIA AVE**

**ELKIN ST**

11307  
**3,600 SF plus  
2,700 SF Basement**

11305c  
Unplugged Restaurant  
& Sports Bar

11305b  
Paul Kee Restaurant

11305  
**4,000 SF plus  
2,500 SF Basement**

ETHIOPLUS  
11303  
Caramelo  
Bakery  
11302

Gisele's  
Creole Cuisine

PRIVATE PARKING

EMPLOYEE  
PARKING

**PRICE AVE**

**RETAIL PLAN**

Site Plan Key

- Available
- Leased

11305-07  
**GEORGIA AVE**  
WHEATON, MD



## DETAILS: 11307

- Street Level: 3,600 SF
- Basement: 2,700 SF
- Pylon Panel
- Builtout Office/Retail Opportunity

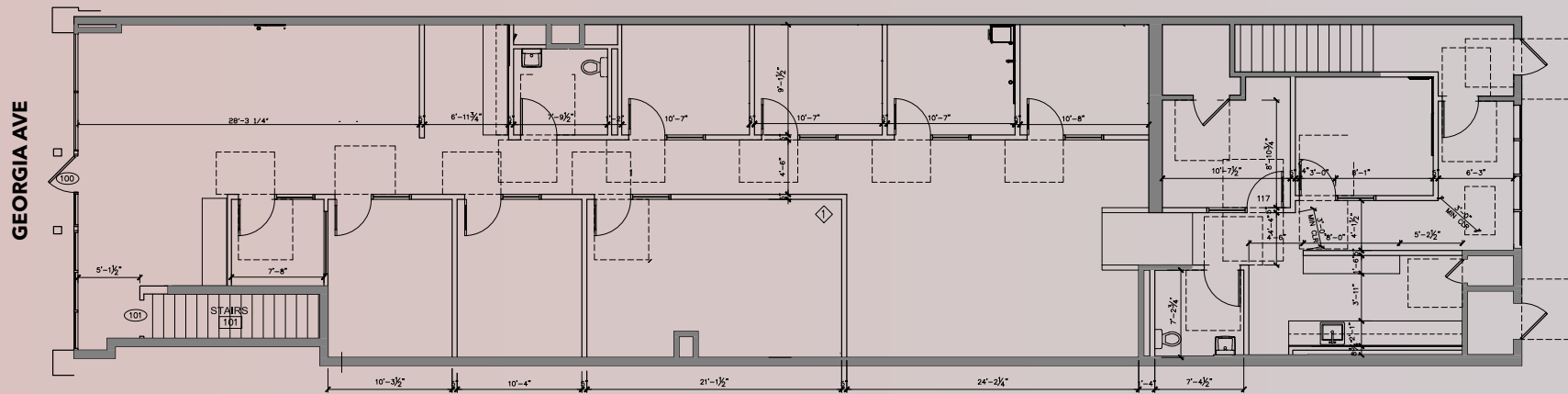


Private Parking in Rear

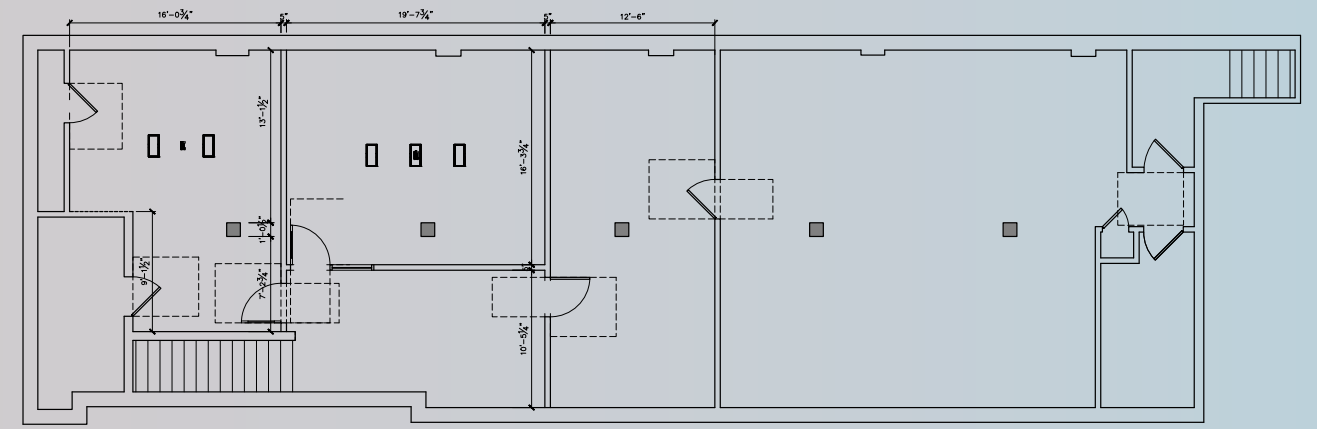


# 3,600 SF

# 2,700 SF



1ST FLOOR PLAN



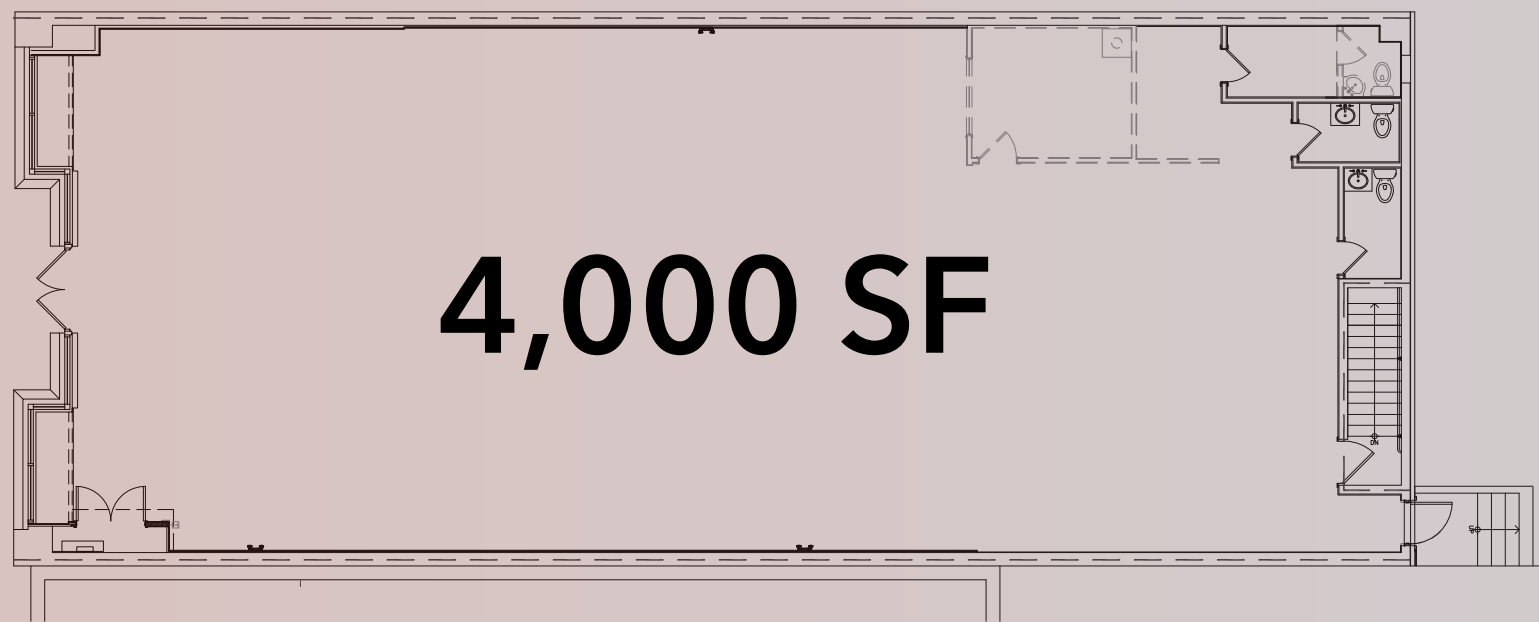
BASEMENT

11305-07  
**GEORGIA AVE**  
WHEATON, MD



**DETAILS: 11305**

- Street Level: 4,000 SF
- Basement: 2,500 SF
- Pylon Panel
- Builtout Office/Retail Opportunity



**4,000 SF**

**1ST FLOOR PLAN**



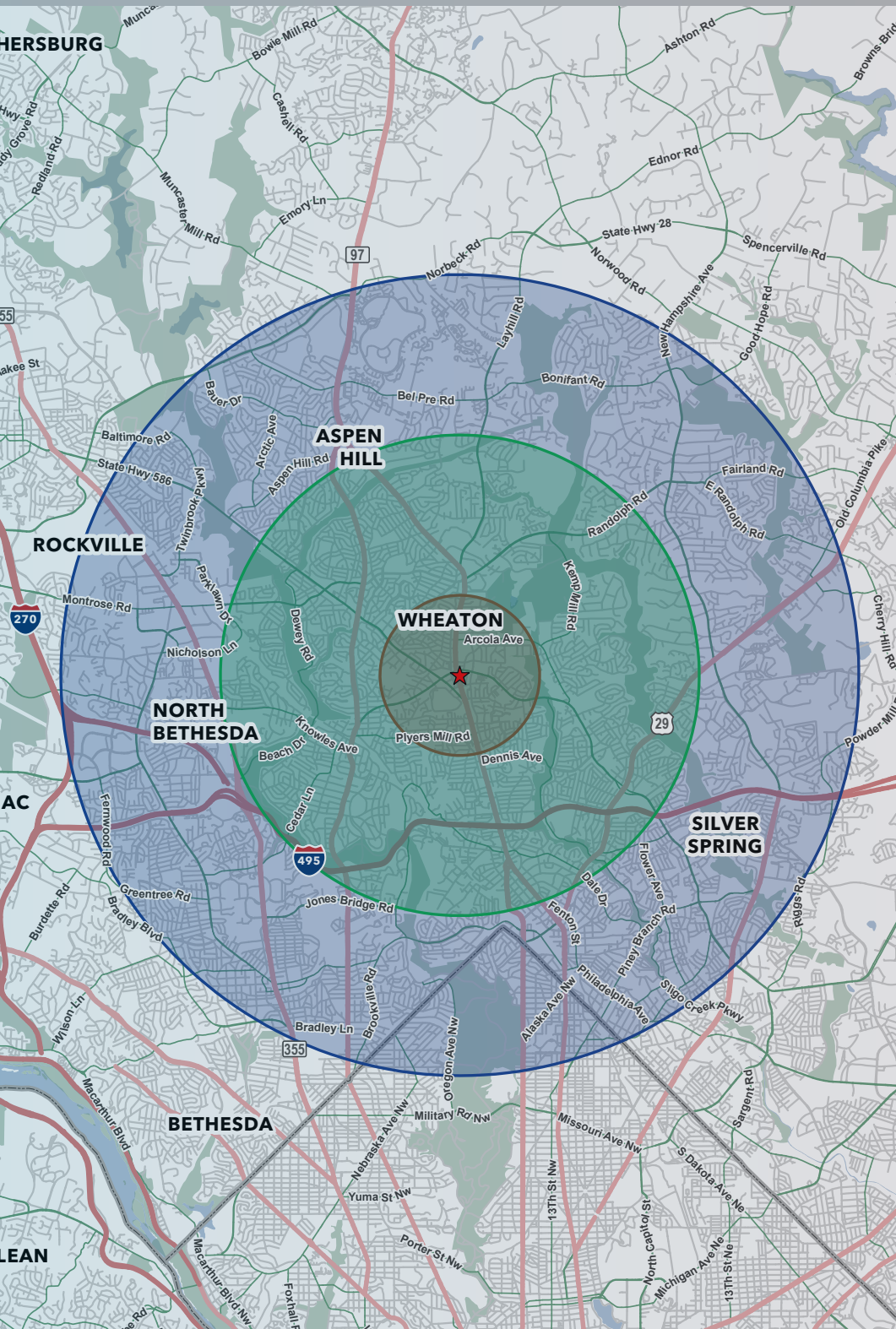
**2,500 SF**

**BASEMENT**

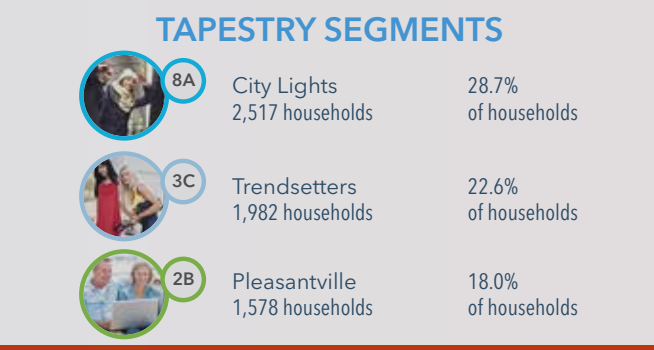
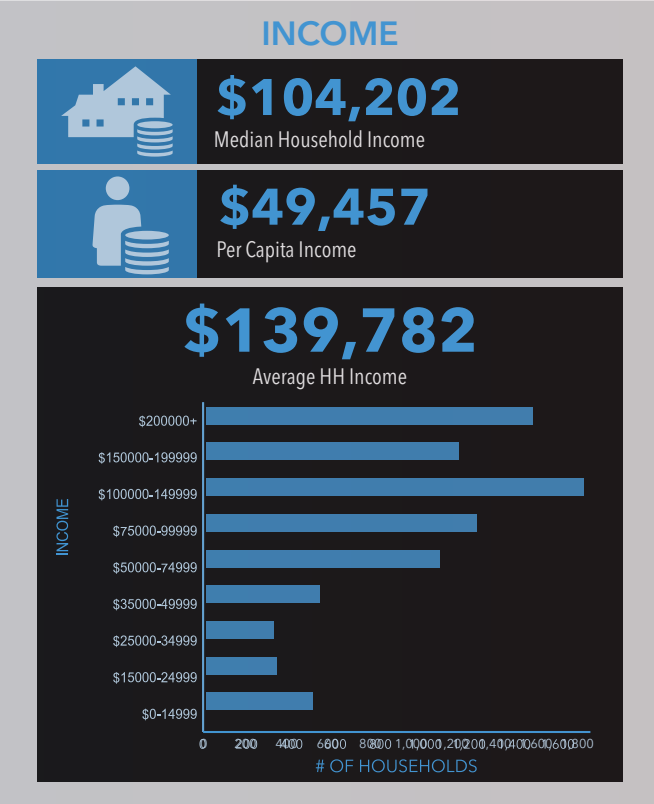
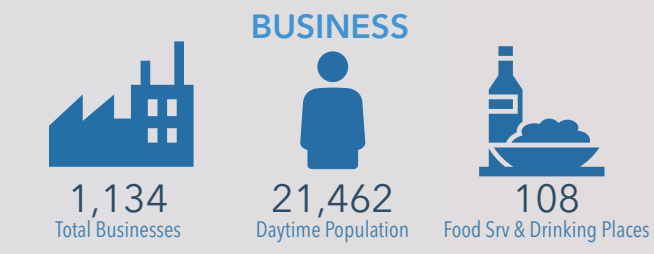
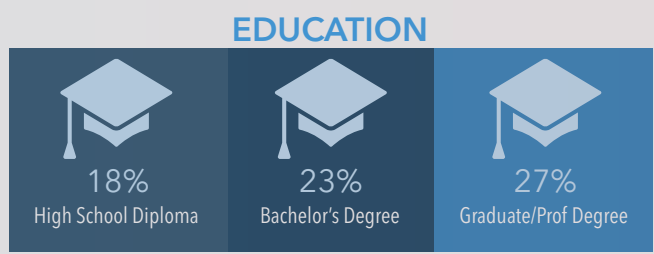
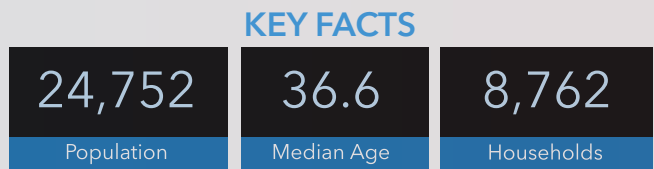


# WHEATON, MD DEMOGRAPHIC PROFILE (2024)

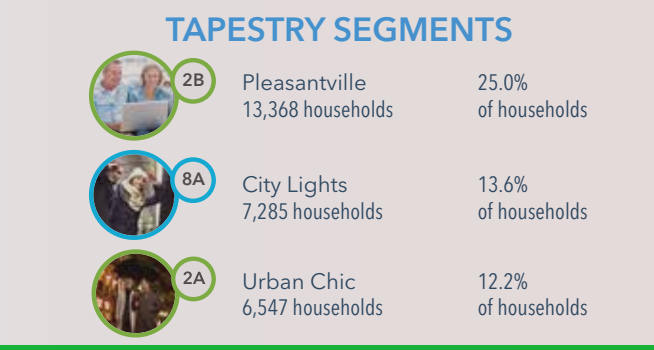
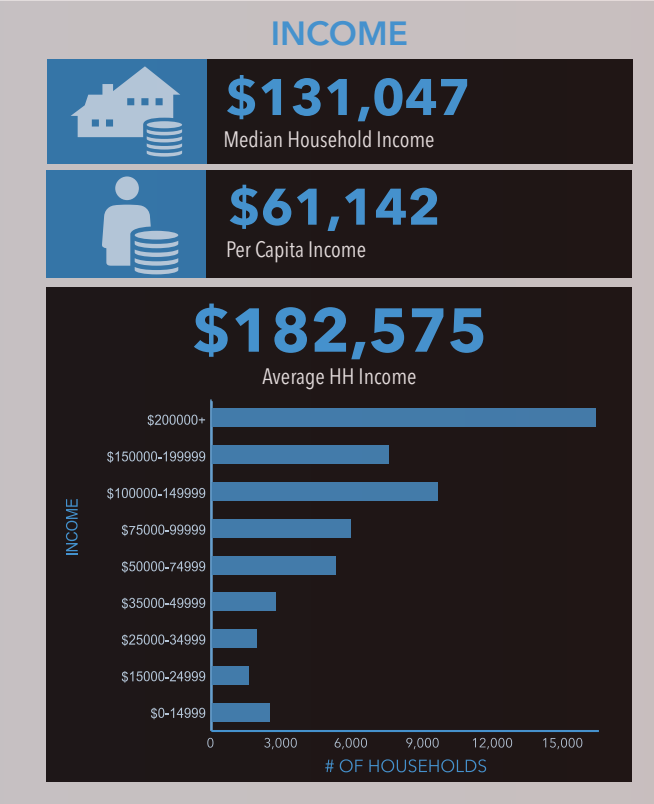
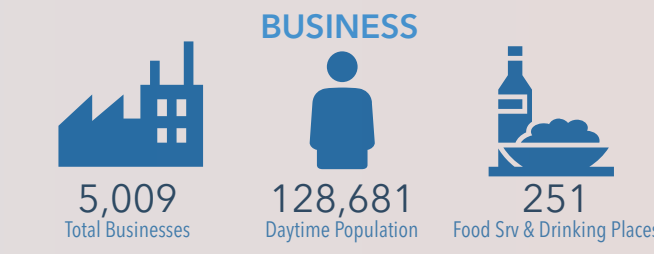
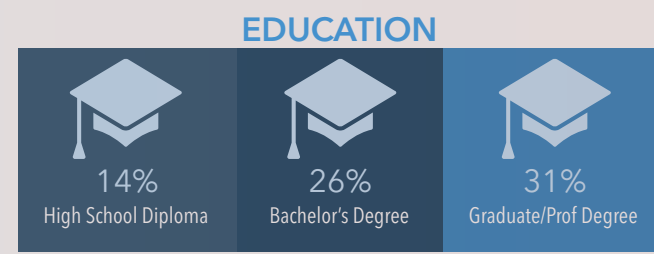
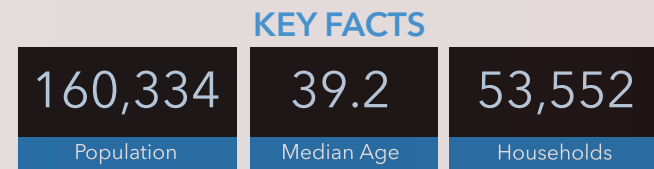
11305-07 Georgia Ave  
1, 3, 5 Mile Rings



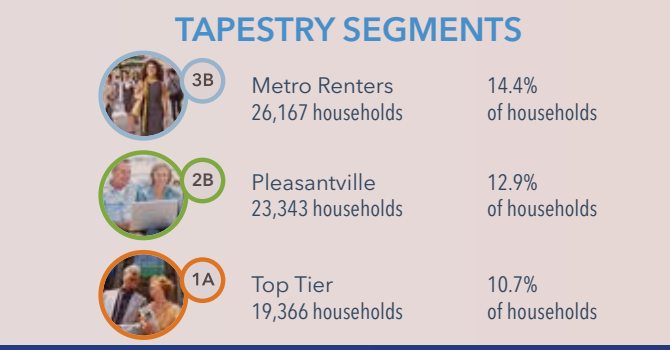
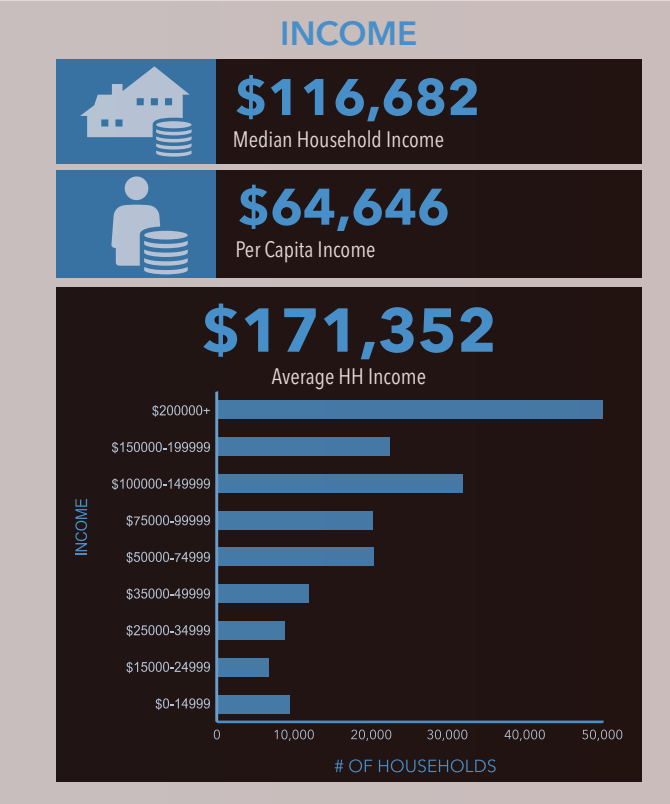
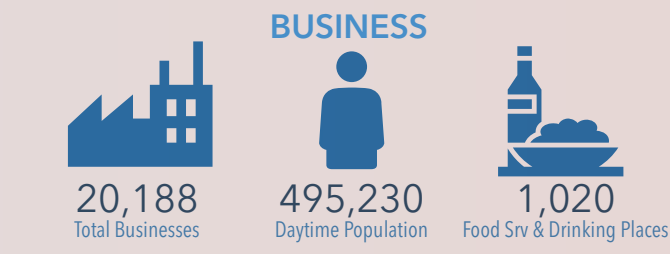
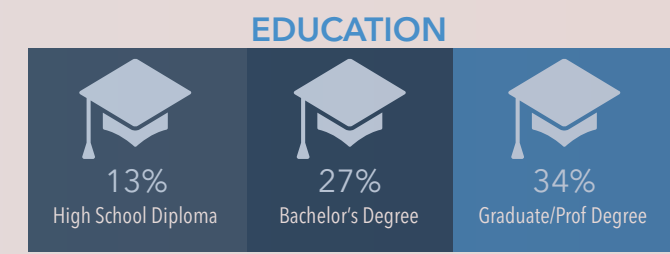
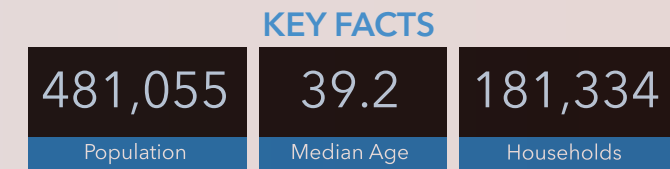
## 1 MILE



## 3 MILES



## 5 MILES



11305-07 **GEORGIA AVE**  
WHEATON, MD



## Retail Leasing

LAWRENCE HOFFMAN  
301.502.8108  
lhoffman@hrretail.com

BRYAN DAVIS  
202.438.7951  
bdavis@hrretail.com