

- ### PROPERTY HIGHLIGHTS
- Phenomenal visibility to Veirs Mill Road with a population of 393,209 in 5 miles
 - 60k cars per day at the intersection of Veirs Mill Road and Randolph Road
 - Dedicated pylon signage available
 - Convenient & ample parking

STONEYMILL SQUARE

COMING SOON

RANDOLPH CROSSING

WESTFIELD WHEATON

GLENMONT S/C

LIDL

WHEATON PARK S/C

KEMP MILL S/C

SAFEMAY

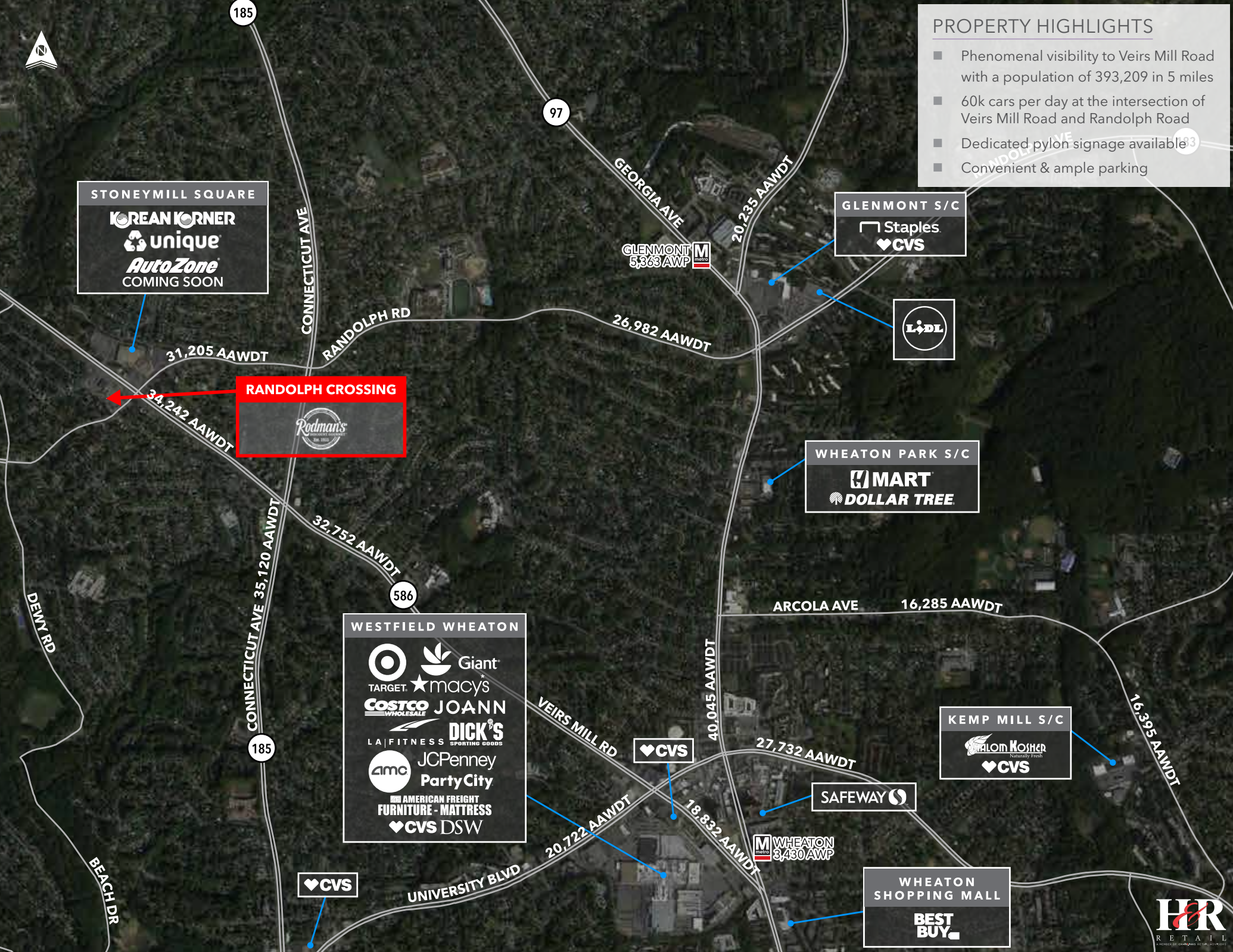
WHEATON SHOPPING MALL

GLENMONT
5,363 AWP

CVS

WHEATON
3,430 AWP

CVS





BARBARA RD

COLIE DR

unique

KOREAN CORNER

AutoZone
COMING SOON

QUICKWAY

STONEMILL SQUARE

BURGER KING

Chakakian
Rugs and Flags

El Jalapeno
Feliz

EXXON

McDonald's

43,751 AAWDT VEIRS MILL RD

31,205 AAWDT RANDOLPH RD

34,242 AAWDT VEIRS MILL RD

RANDOLPH CROSSING

AVAILABLE
12,000 SF

DUNKIN'

Megenagna
Ethiopian Market

Rodman's
Discount Store

GRIDLEY RD

25,225 AAWDT

SELFRIDGE RD

RANDOLPH RD