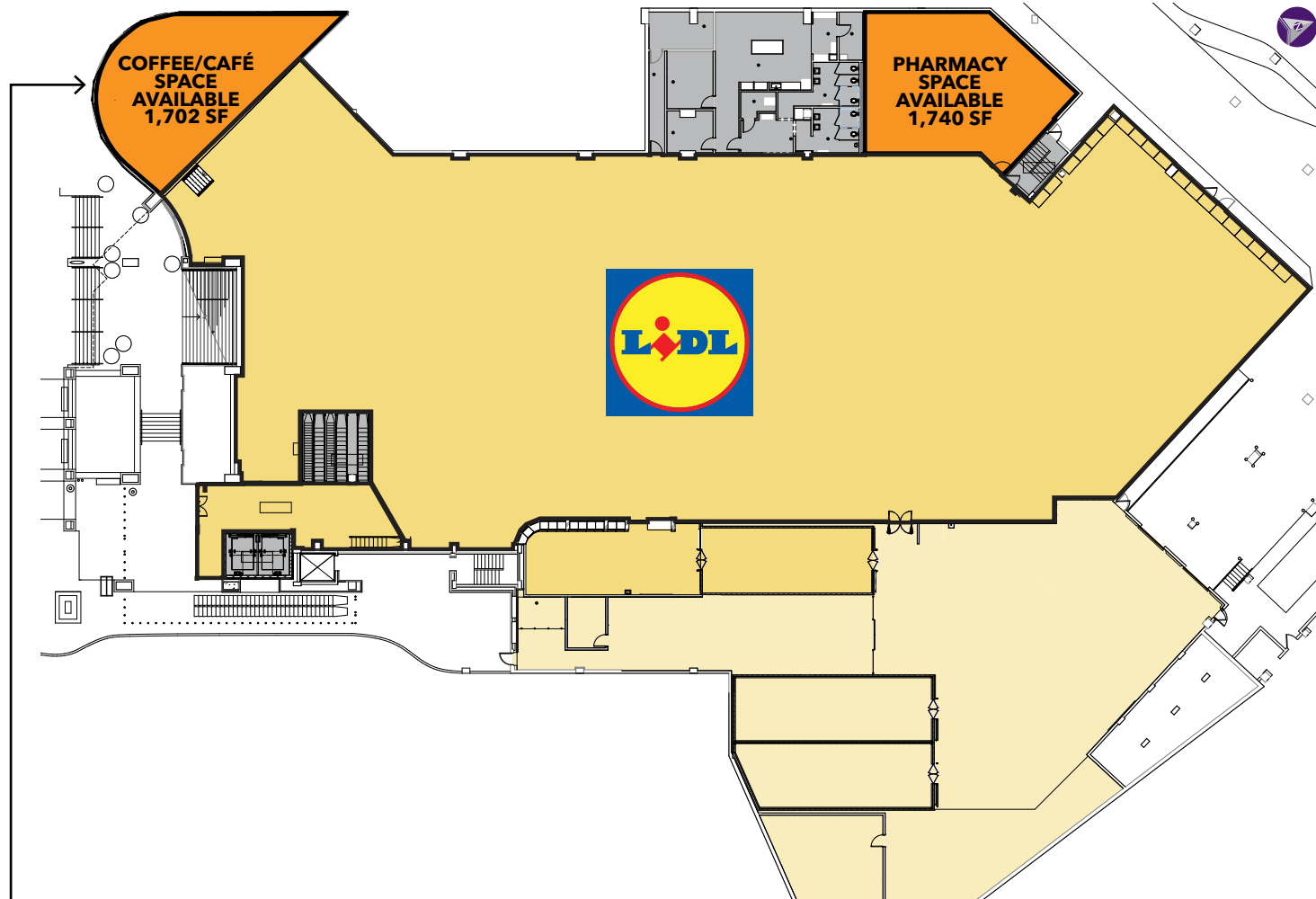


7625 OLD GEORGETOWN ROAD ■ BETHESDA, MD



COFFEE/CAFÉ



Information herein has been obtained from sources believed to be reliable. While we do not doubt its accuracy, we have not verified it and make no guarantee, warranty or representation about it. Independent confirmation of its accuracy and completeness is your responsibility. H&R Retail, Inc.

7625 OLD GEORGETOWN RD

BETHESDA, MARYLAND

JOIN



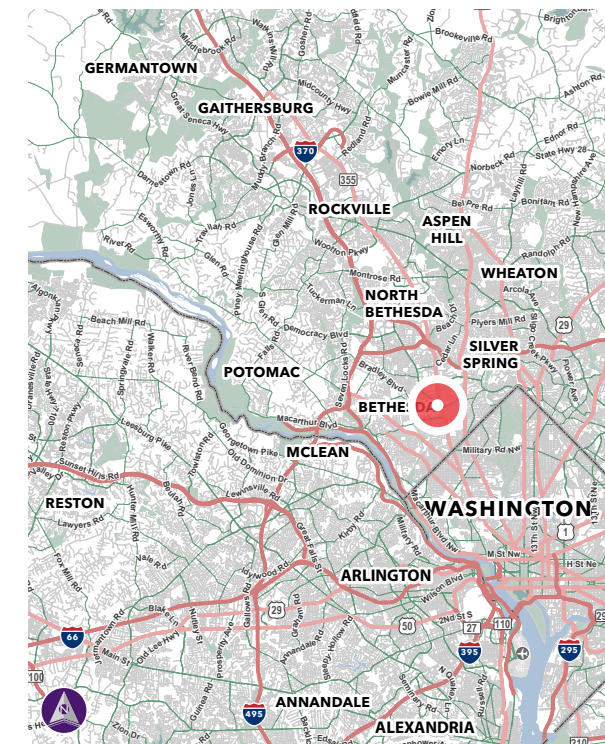
SPACE AVAILABLE

PROPERTY HIGHLIGHTS

- Unique opportunity for corner space in the heart of Bethesda
- 1,702 square foot former coffee/cafe space available
- 1,740 square foot former pharmacy space available
- Adjacent to the new Marriott headquarters with 3,500 employees and a 12-story flagship Marriott hotel
- Direct access from Old Georgetown Road with dedicated parking, making this location a convenient spot for pedestrians and drivers
- Benefits from the continued development of downtown Bethesda with over 3,350 residential units planned
- Within walking distance of high end shopping and dining at Bethesda Row

THE MARKET

	1 MILE	3 MILE	5 MILE
POPULATION	27,362	155,200	469,922
AVERAGE HH INCOME	\$219,224	\$259,260	\$206,844
DAYTIME POPULATION	48,793	197,683	514,310



CONTACT

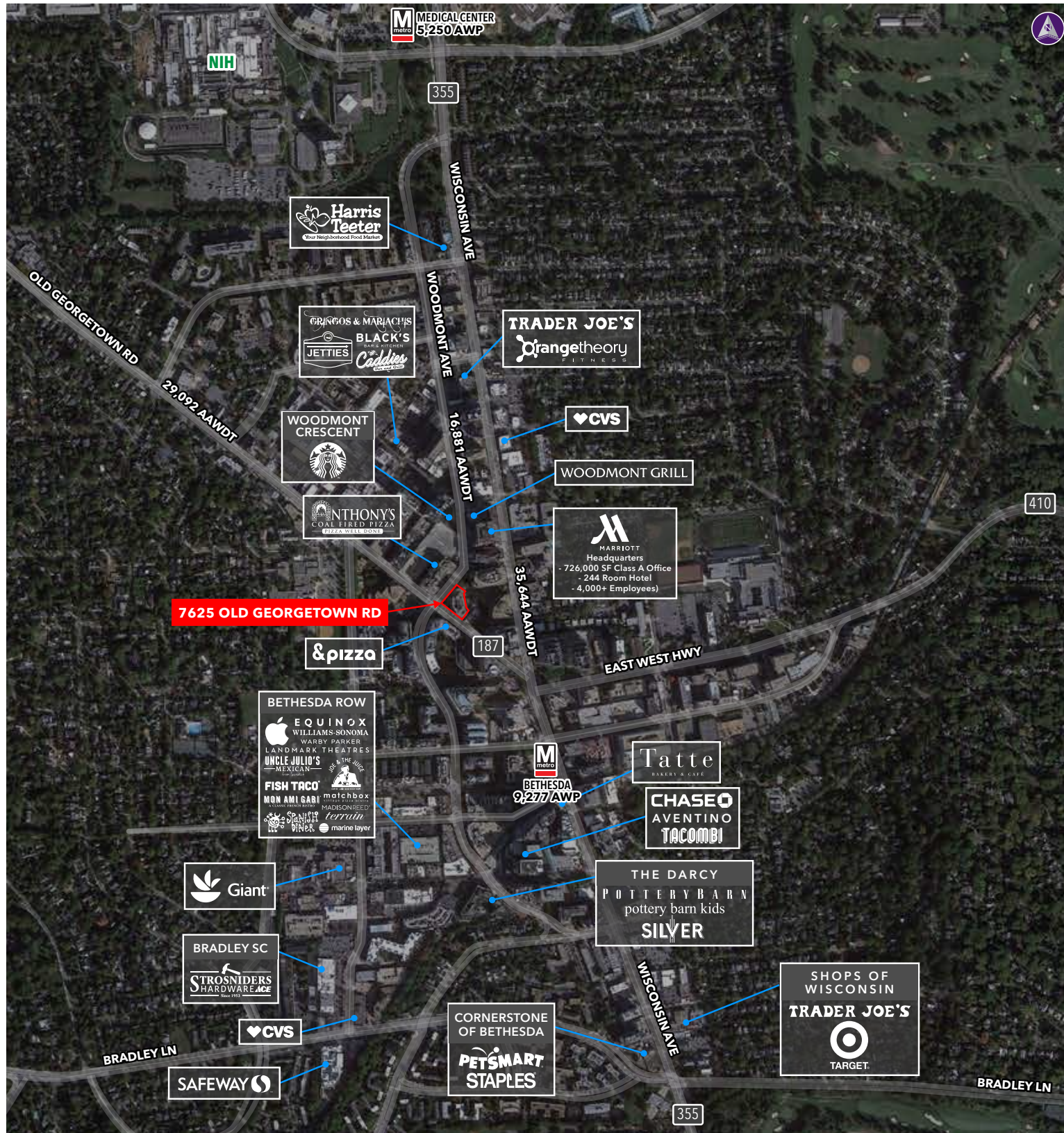
BRADLEY BUSLIK
D: 240.482.3609
C: 646.773.6805
bbuslik@hrretail.com

GEOFFREY MACKLER
D: 240.482.3616
C: 410.627.3636
gmackler@hrretail.com

BALTIMORE, MD
1 W Pennsylvania Avenue
Suite 320
Baltimore, MD 21204
O: 410.308.0800

WASHINGTON, DC
3 Bethesda Metro Center
Suite 620
Bethesda, MD 20814
O: 301.656.3030

7625 OLD GEORGETOWN ROAD ■ BETHESDA, MD



COMING SOON AVAILABLE

