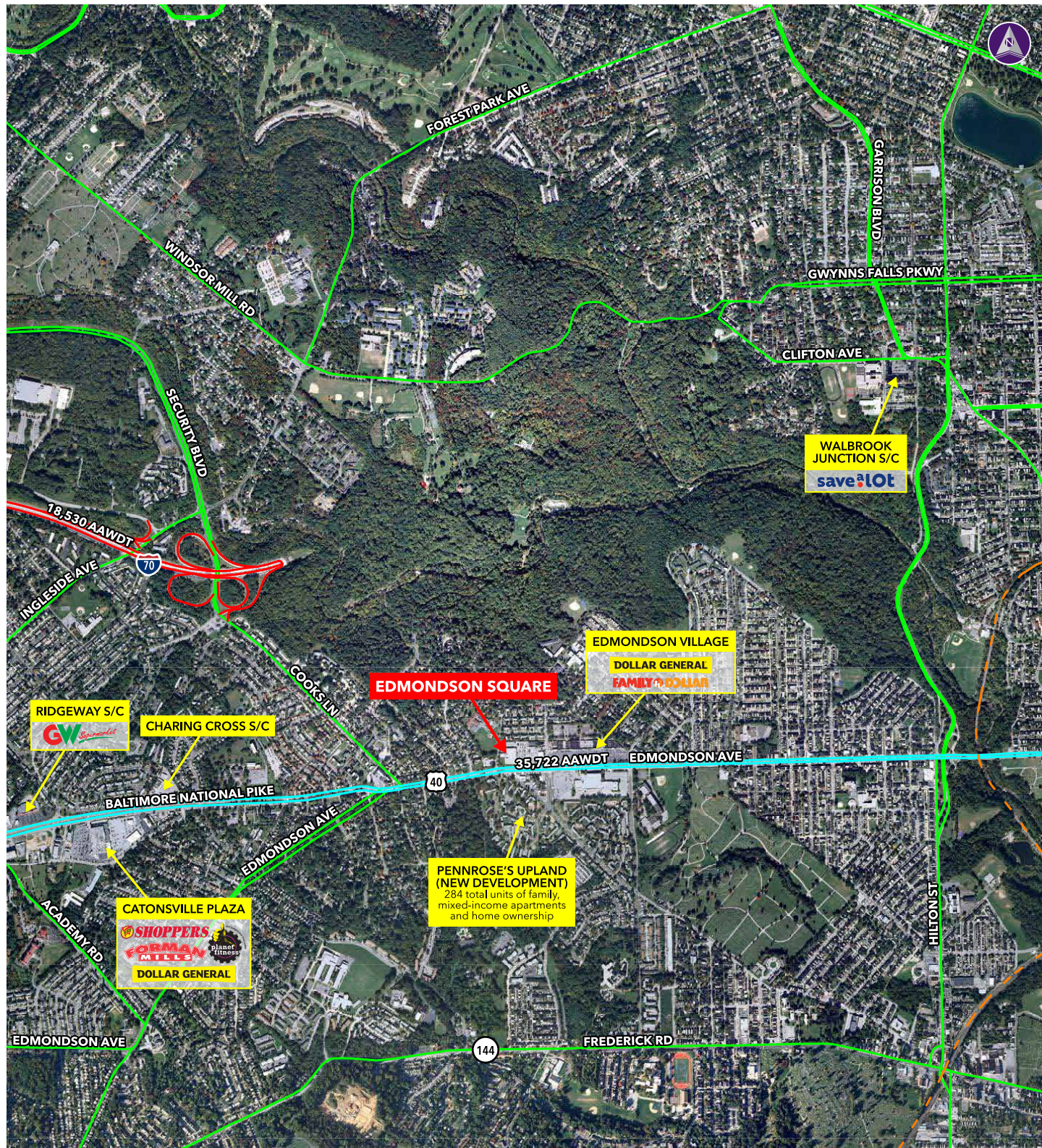


EDMONDSON SQUARE ■ BALTIMORE, MD



Information herein has been obtained from sources believed to be reliable. While we do not doubt its accuracy, we have not verified it and make no guarantee, warranty or representation about it. Independent confirmation of its accuracy and completeness is your responsibility. H&R Retail, Inc.

Edmondson Square

4600 EDMONDSON AVENUE | BALTIMORE, MD 21229

2,000 SF AVAILABLE



Property Highlights

- Over 168,000 people in 3 miles
- Across from Pennrose's Uplands development with 284 units www.pennrose.com
- Two pylons within the property

Demographics (2024 Estimated)

| | 1 Mile | 3 Mile | 5 Mile |
|--------------------|----------|----------|----------|
| Population | 19,371 | 168,300 | 441,989 |
| Average HH Income | \$72,178 | \$77,257 | \$90,242 |
| Daytime Population | 13,647 | 159,764 | 525,459 |

Please Contact

| Lawrence Hoffman | Bryan Davis |
|-----------------------|-----------------------|
| 240.482.3610 (direct) | 240.482.3612 (direct) |
| 301.656.3030 (office) | 301.656.3030 (office) |
| 301.502.8108 (cell) | 202.438.7951 (cell) |
| lhoffman@hrretail.com | bdavis@hrretail.com |

EDMONDSON SQUARE ■ BALTIMORE, MD

