

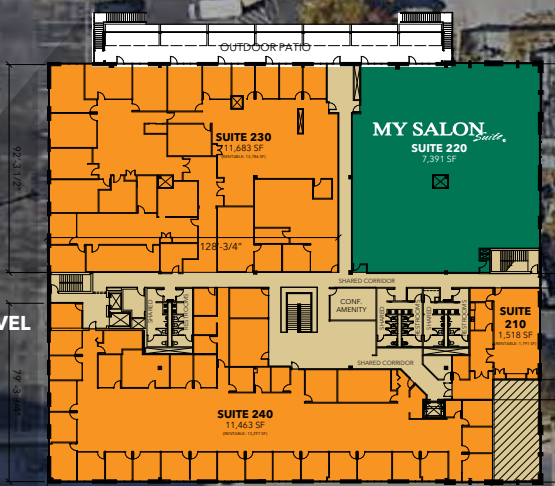
SITE PLANS



CANTON WATERFRONT **P**

WATERFRONT PUBLIC PAID PARKING LOT
APPROX 650 SPACES

UPPER LEVEL



9,990 AAWDT

S CLINTON ST

SIGNAGE PYLON



GROUND LEVEL



CareFirst **+**
214,000 SF
~200 employees

BOSTON ST 19,682 AAWDT

S HIGHLAND AVE

P

PARKING GARAGE
134 SPACES

merritt clubs

BAYLIS ST

- Site Plan Key
- Open
 - Signed Lease
 - Available
 - At Lease

0 90 FEET

ULTA

FIVE BEL'W LOFT

DSW