



CENTER WEST

101 & 201 N. SCHROEDER STREET | BALTIMORE, MD 21223

201 N. SCHROEDER STREET

101 N. SCHROEDER STREET



PLEASE CONTACT

BRIAN MITCHELL
240.482.3604
bmitchell@hrretail.com

UP TO 9,971 SF AVAILABLE
IMMEDIATELY IN PHASE I

PROPERTY HIGHLIGHTS

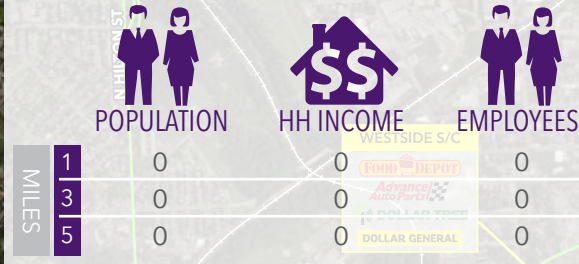
- Redeveloped 32.94 acres of land in the Poppleton neighborhood of Southwest Baltimore, located on the block between of N. Schroeder and N. Amity Streets, extending from W. Baltimore to W. Lexington Streets.

- Development includes four phases:

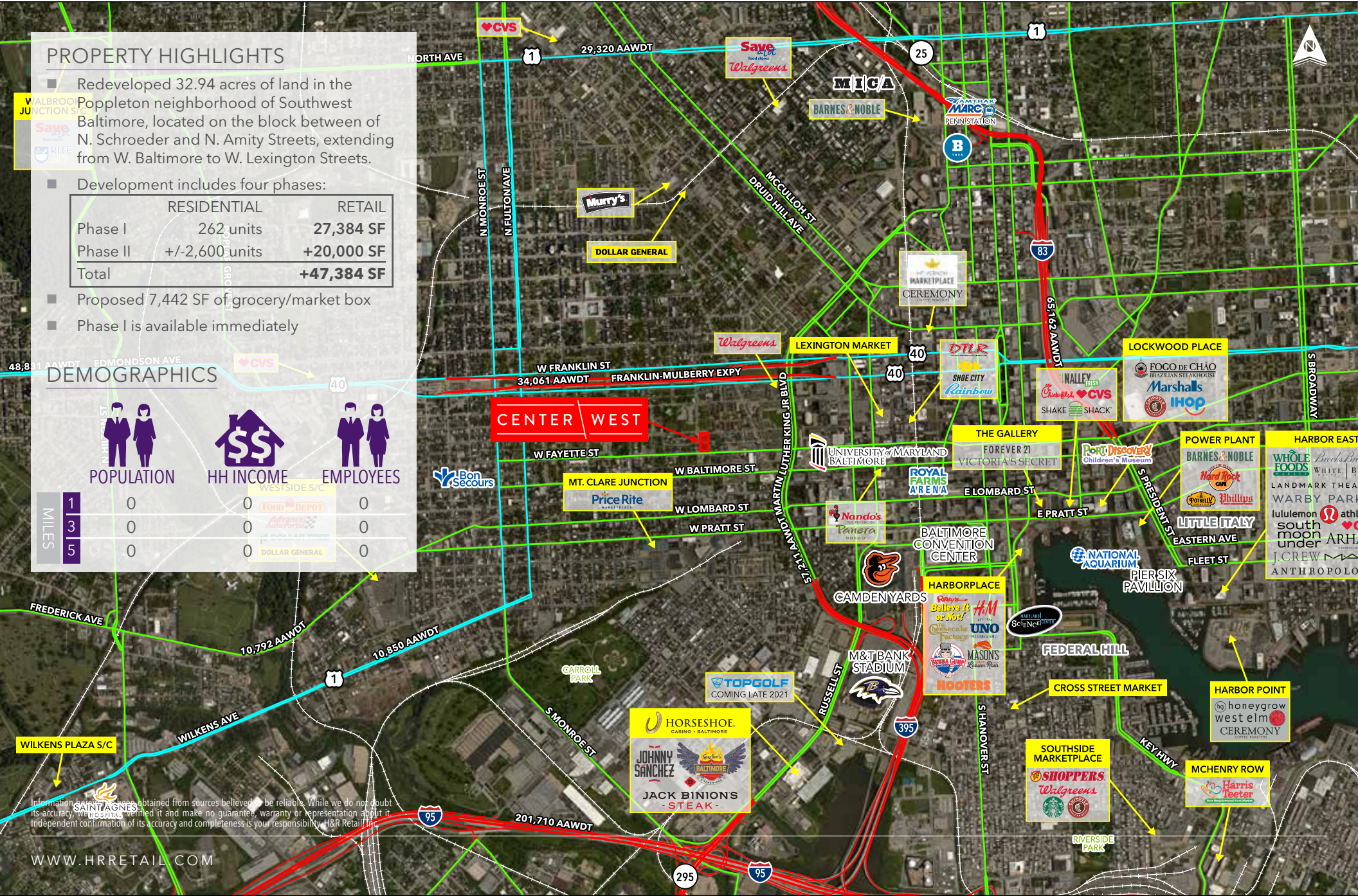
	RESIDENTIAL	RETAIL
Phase I	262 units	27,384 SF
Phase II	+/-2,600 units	+20,000 SF
Total		+47,384 SF

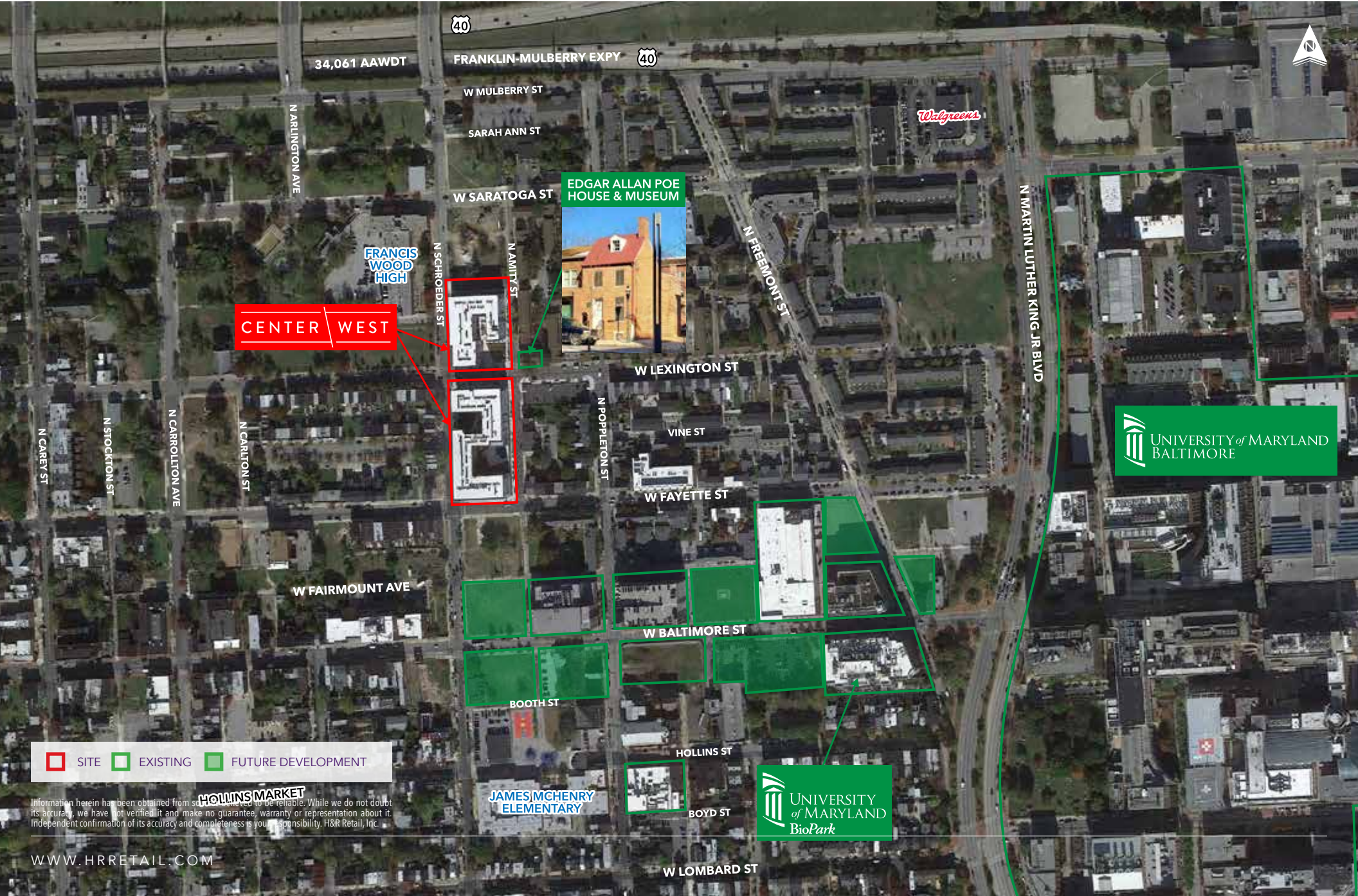
- Proposed 7,442 SF of grocery/market box
- Phase I is available immediately

DEMOGRAPHICS



Information herein was obtained from sources believed to be reliable. While we do not doubt its accuracy, we do not warrant it and make no guarantee, warranty or representation about it. Independent confirmation of its accuracy and completeness is your responsibility. HR Retail Inc.





CENTER WEST



EDGAR ALLAN POE HOUSE & MUSEUM

Walgreens

 UNIVERSITY of MARYLAND
BALTIMORE

 UNIVERSITY of MARYLAND
BioPark

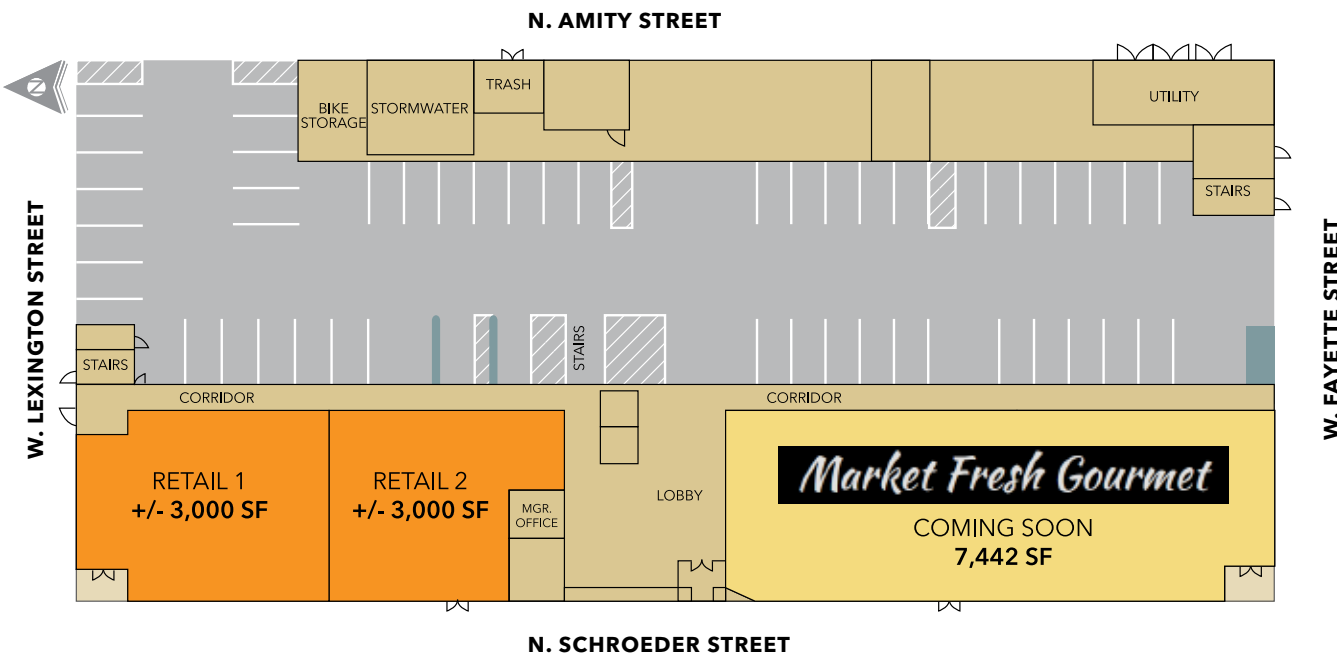
JAMES MCHENRY
ELEMENTARY

SITE
 EXISTING
 FUTURE DEVELOPMENT

Information herein has been obtained from sources deemed reliable. While we do not doubt its accuracy, we have not verified it and make no guarantee, warranty or representation about it. Independent confirmation of its accuracy and completeness is your responsibility. H&R Retail, Inc.



13,442 SF 101 N. SCHROEDER STREET



Site Plan Key

LEASED AVAILABLE



CENTER WEST

BALTIMORE, MD



PLEASE CONTACT

BRIAN MITCHELL
240.482.3604
bmittell@hrretail.com

WWW.HRRETAIL.COM