

JC PENNEY EXISTING BUILDING

ACCT NO 90042470
LANDS N/F
ANNAPOLIS MALL LIMITED PARTNERSHIP
D.B. 3281 PG. 216

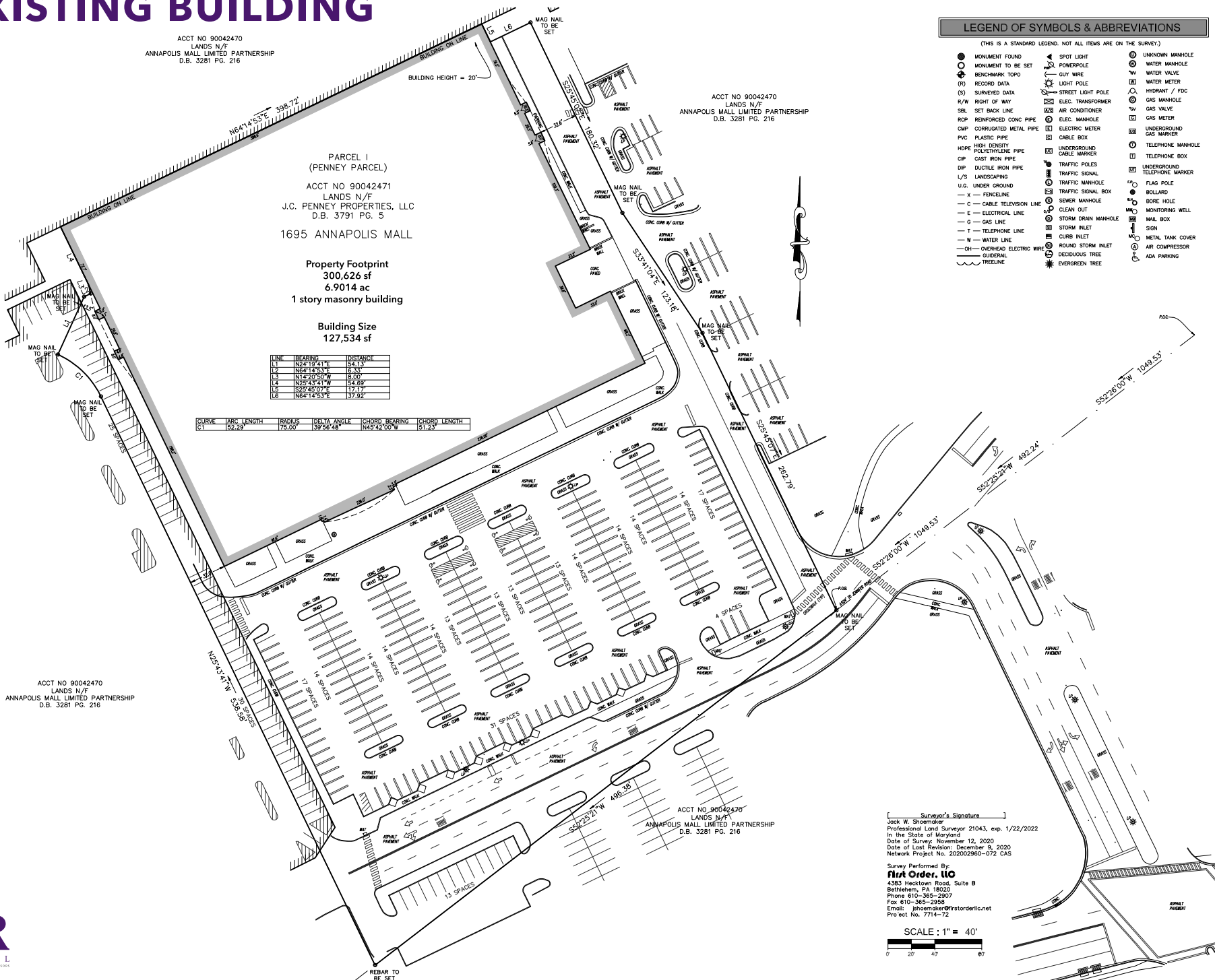
PARCEL I
(PENNEY PARCEL)
ACCT NO 90042471
LANDS N/F
J.C. PENNEY PROPERTIES, LLC
D.B. 3791 PG. 5
1695 ANNAPOLIS MALL

Property Footprint
300,626 sf
6.9014 ac
1 story masonry building

Building Size
127,534 sf

LINE	BEARING	DISTANCE
L1	N24°19'21"E	52.13
L2	N64°14'53"E	63.33
L3	N14°20'50"W	8.00
L4	N25°43'07"E	37.13
L5	N25°43'07"E	37.13
L6	N64°14'53"E	37.92

CURVE	ARC LENGTH	RADIUS	DELTA ANGLE	CHORD BEARING	CHORD LENGTH
C1	52.79	75.00	39°56'48"	N45°42'00"W	51.23

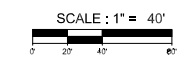


LEGEND OF SYMBOLS & ABBREVIATIONS

- (THIS IS A STANDARD LEGEND. NOT ALL ITEMS ARE ON THE SURVEY.)
- MONUMENT FOUND
 - MONUMENT TO BE SET
 - ⊕ BENCHMARK TOPO
 - (R) RECORD DATA
 - (S) SURVEYED DATA
 - R/W RIGHT OF WAY
 - SRL SET BACK LINE
 - RCP REINFORCED CONC PIPE
 - CMP CORRUGATED METAL PIPE
 - PVC PLASTIC PIPE
 - HDPE HIGH DENSITY POLYETHYLENE PIPE
 - CP CAST IRON PIPE
 - DP DUCTILE IRON PIPE
 - L/S LANDSCAPING
 - U.G. UNDER GROUND
 - X - FENCELINE
 - C - CABLE TELEVISION LINE
 - E - ELECTRICAL LINE
 - G - GAS LINE
 - T - TELEPHONE LINE
 - W - WATER LINE
 - OH - OVERHEAD ELECTRIC WIRE
 - GUIDELINE
 - TREELINE
 - ⊙ SPOT LIGHT
 - ⊕ POWERPOLE
 - ⊕ LIGHT POLE
 - ⊕ STREET LIGHT POLE
 - ⊕ ELEC. TRANSFORMER
 - ⊕ AIR CONDITIONER
 - ⊕ ELEC. MANHOLE
 - ⊕ ELECTRIC METER
 - ⊕ CABLE BOX
 - ⊕ UNDERGROUND CABLE MARKER
 - ⊕ TRAFFIC POLES
 - ⊕ TRAFFIC SIGNAL
 - ⊕ TRAFFIC MANHOLE
 - ⊕ TRAFFIC SIGNAL BOX
 - ⊕ SEWER MANHOLE
 - ⊕ CLEAN OUT
 - ⊕ STORM DRAIN MANHOLE
 - ⊕ CURB INLET
 - ⊕ ROUND STORM INLET
 - ⊕ DECIDUOUS TREE
 - ⊕ EVERGREEN TREE
 - ⊕ UNKNOWN MANHOLE
 - ⊕ WATER MANHOLE
 - ⊕ WATER VALVE
 - ⊕ WATER METER
 - ⊕ HYDRANT / FDC
 - ⊕ GAS MANHOLE
 - ⊕ GAS VALVE
 - ⊕ GAS METER
 - ⊕ UNDERGROUND GAS MARKER
 - ⊕ TELEPHONE MANHOLE
 - ⊕ TELEPHONE BOX
 - ⊕ UNDERGROUND TELEPHONE MARKER
 - ⊕ TRAFFIC POLES
 - ⊕ TRAFFIC SIGNAL
 - ⊕ TRAFFIC MANHOLE
 - ⊕ TRAFFIC SIGNAL BOX
 - ⊕ BOLLARD
 - ⊕ BORE HOLE
 - ⊕ MONITORING WELL
 - ⊕ MAIL BOX
 - ⊕ SIGN
 - ⊕ METAL TANK COVER
 - ⊕ AIR COMPRESSOR
 - ⊕ ADA PARKING

Surveyor's Signature
Jack W. Shover
Professional Land Surveyor 21043, exp. 1/22/2022
in the State of Maryland
Date of Survey: November 12, 2020
Date of Last Revision: December 3, 2020
Network Project No. 20200260-072 CAS

Survey Performed By:
first order, llc
4383 Hecktown Road, Suite B
Bethlehem, PA 18020
Phone 610-365-2907
Fax 610-365-2958
Email: jshover@firstorderllc.net
Pro cot No. 7714-72



JC PENNEY LOD

