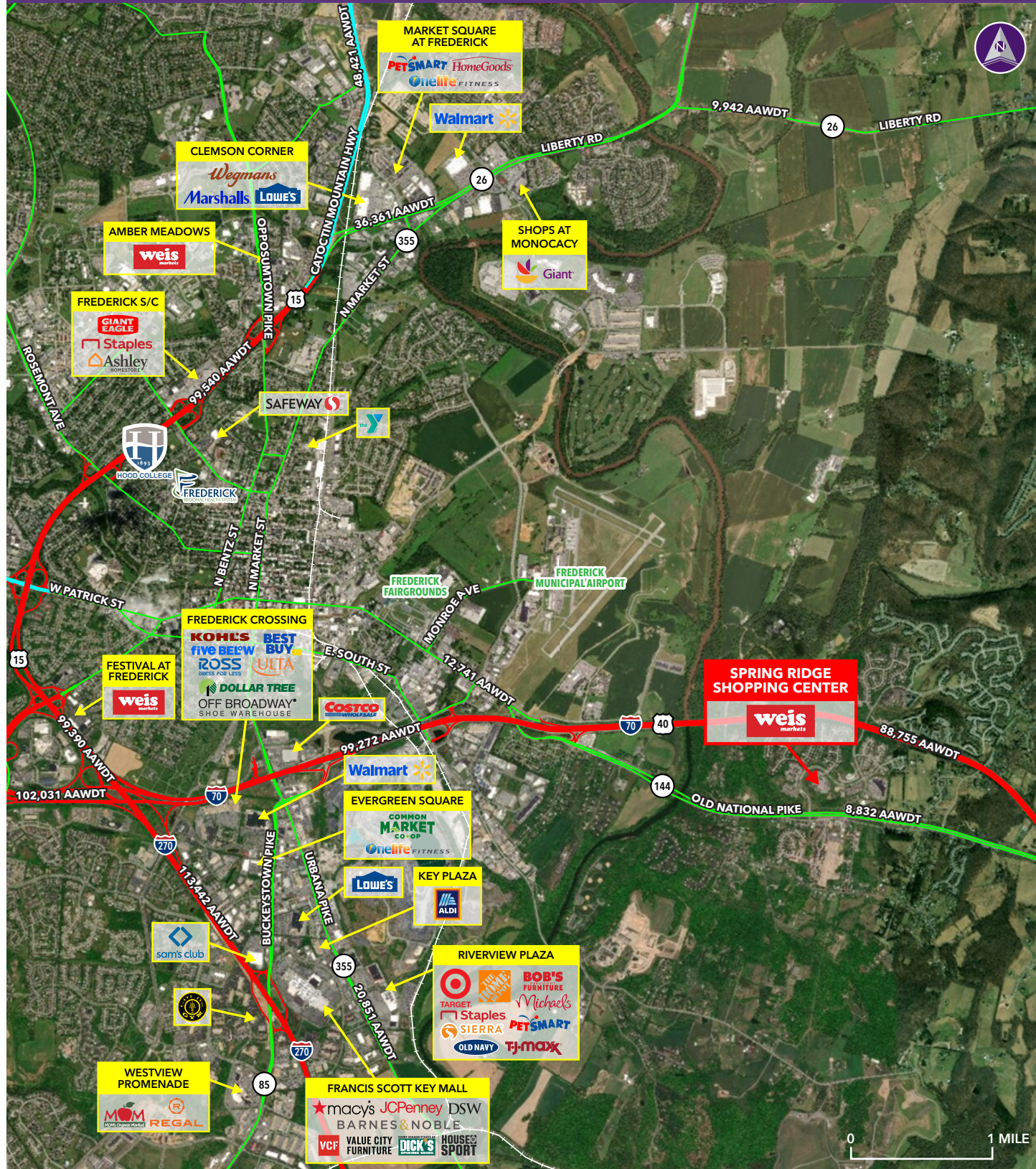


**SPRING RIDGE SHOPPING CENTER ■ FREDERICK, MD**



Information herein has been obtained from sources believed to be reliable. While we do not doubt its accuracy, we have not verified it and make no guarantee, warranty or representation about it. Independent confirmation of its accuracy and completeness is your responsibility. H&R Retail, Inc.

**Spring Ridge Shopping Center**

6079 SPRING RIDGE PARKWAY | FREDERICK, MD 21701

**1,260 SF & 2,960 SF SPACES COMING AVAILABLE**



**Property Highlights**

- Two spaces coming available
- Located in very affluent area
- Strong neighborhood center with rare vacancy
- Owned and managed by: **weis markets**

**Demographics (2025 Estimated)**

	<b>1 Mile</b>	<b>3 Mile</b>	<b>5 Mile</b>
Population	7,982	26,862	110,700
Average HH Income	\$178,424	\$172,192	\$150,910
Number of Households	2,845	9,221	41,237
Daytime Population	5,381	25,362	125,831

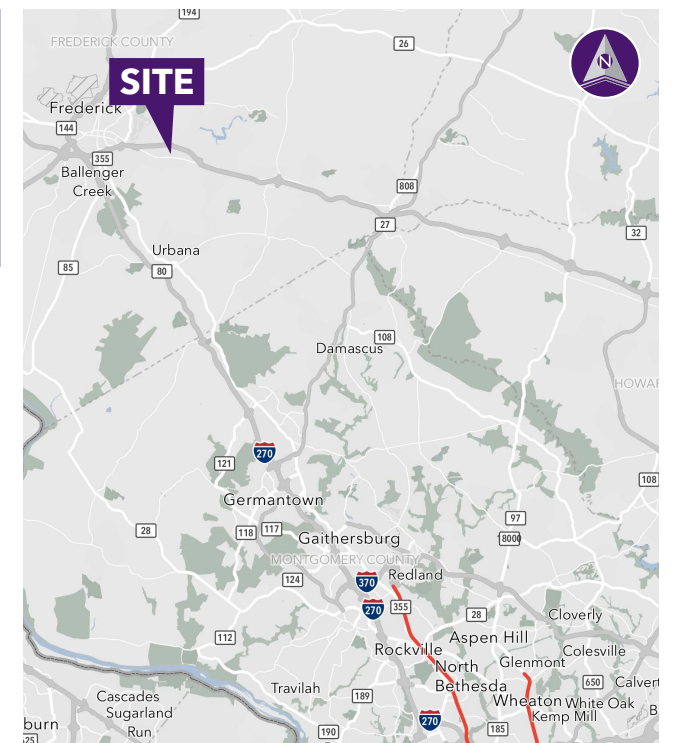
**Please contact**

**Bryan Davis**

202.438.7951 (cell)  
240.482.3612 (direct)  
bdavis@hrretail.com

**Morgan Arrup**

443.886.4575 (cell)  
240.616.6081 (direct)  
marrup@hrretail.com



SPRING RIDGE SHOPPING CENTER ■ FREDERICK, MD

