

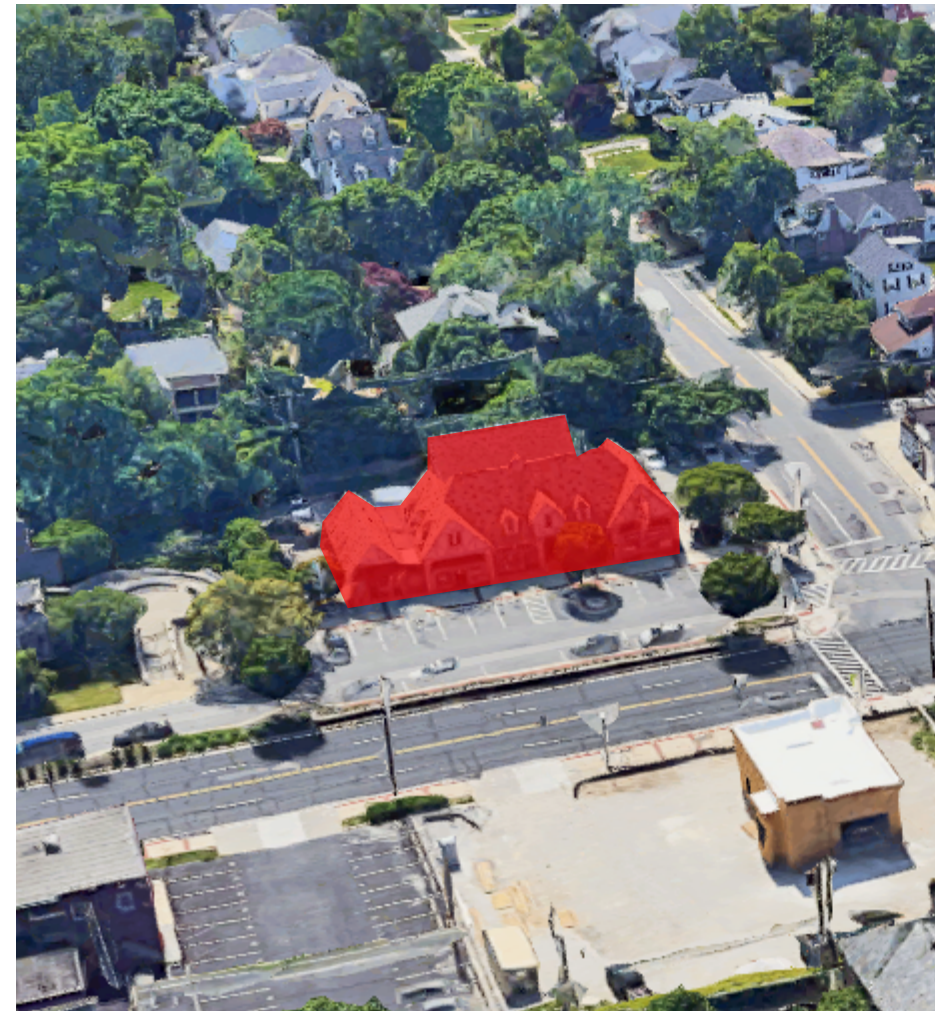
THE STONELEIGH WALK

BALTIMORE, MD

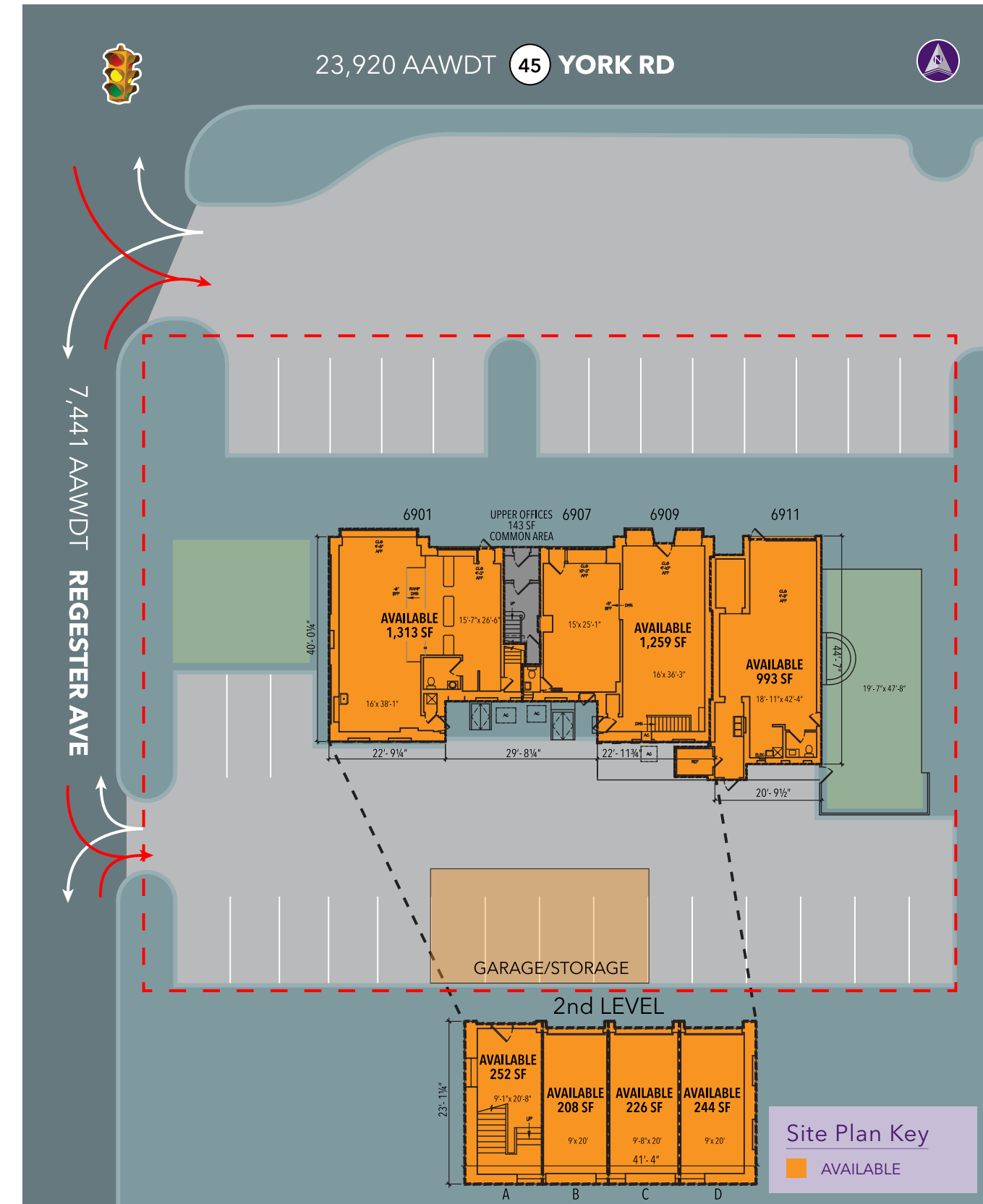
6901 YORK ROAD

993 SF to 6,000 SF available

- Fantastic location, located at the corner of York Road and Regester Avenue
- 23,920 vehicles per day on York Road
- High income of \$126,397 within 1 mile
- Ample parking on site by Spot Hero
- Signalized intersection
- Across from new Starbucks



6901 • 6705 • 6607 • 6603
YORK ROAD



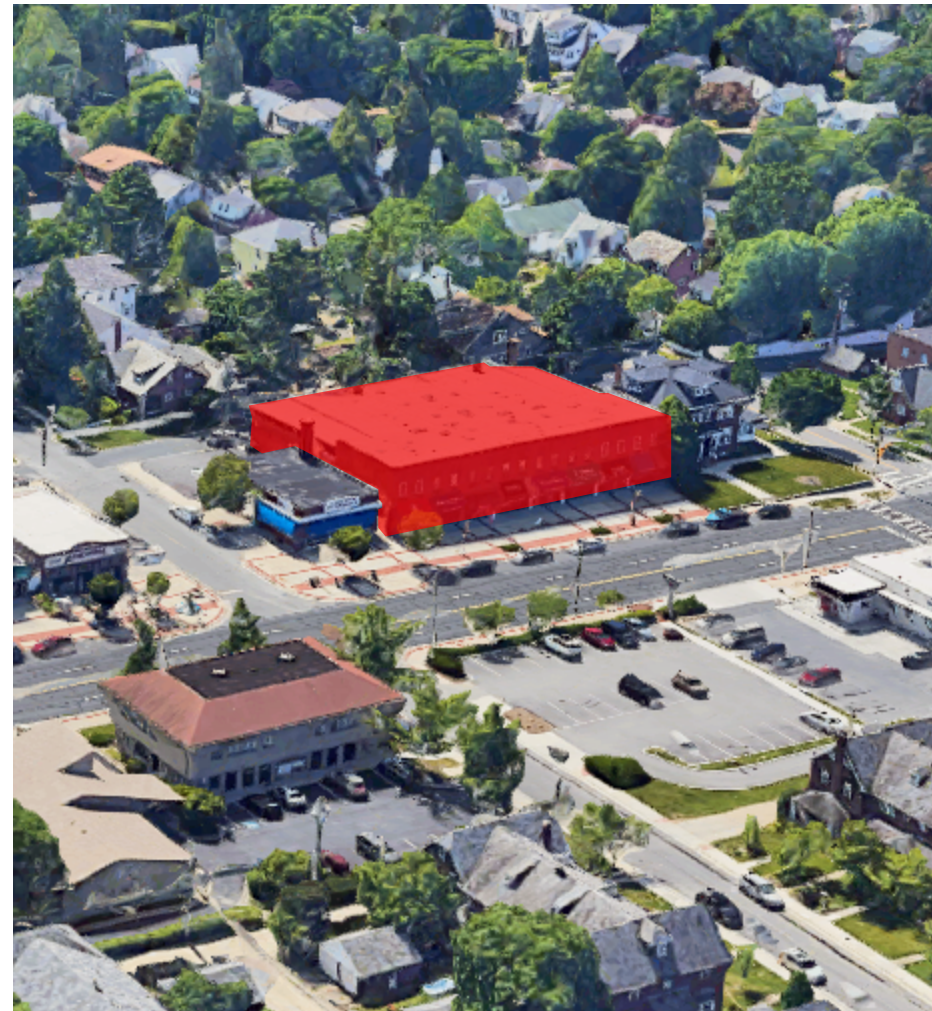
THE STONELEIGH WALK

BALTIMORE, MD

**6705
YORK ROAD**

**1,500 SF
available**

- Fantastic location, located at York Road and Murdock Road
- Street parking in front and back of the building
- Second generation salon space available
- 1,500 SF available
- New renovated apartments coming to second floor



6901 • 6705 • 6607 • 6603
YORK ROAD

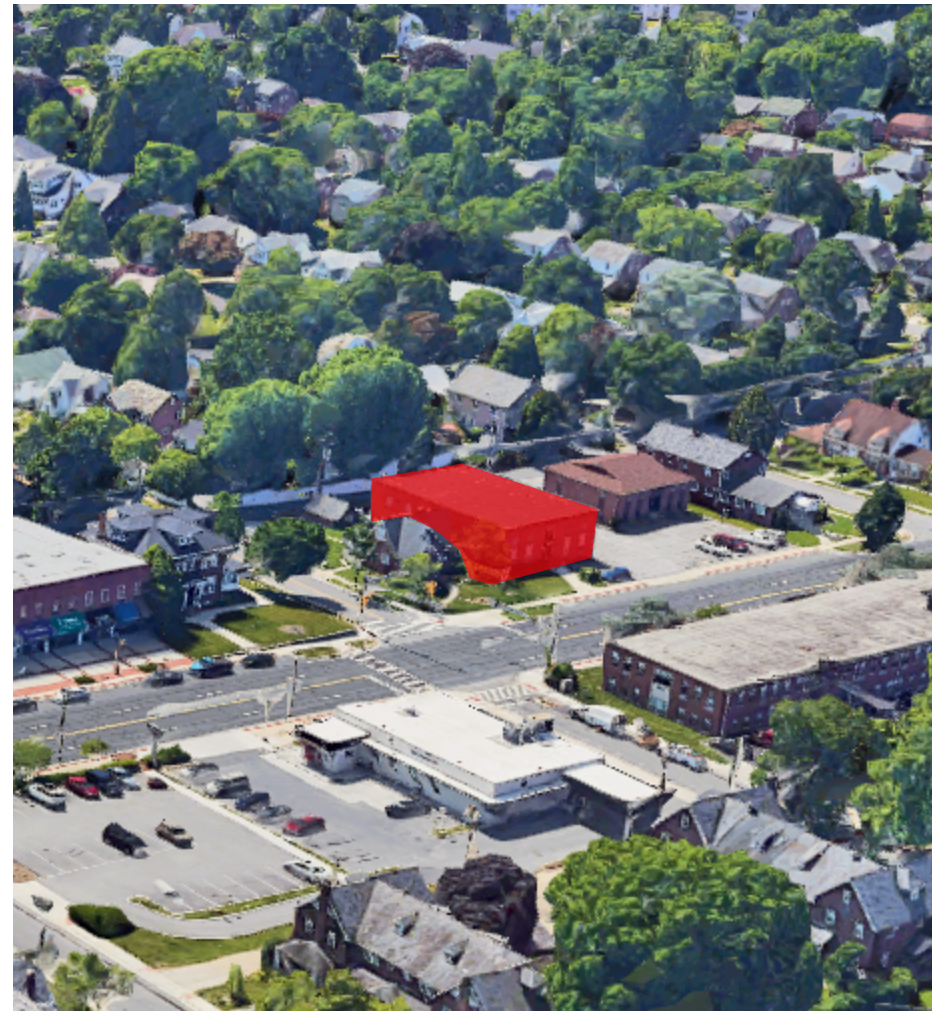
THE STONELEIGH WALK

BALTIMORE, MD

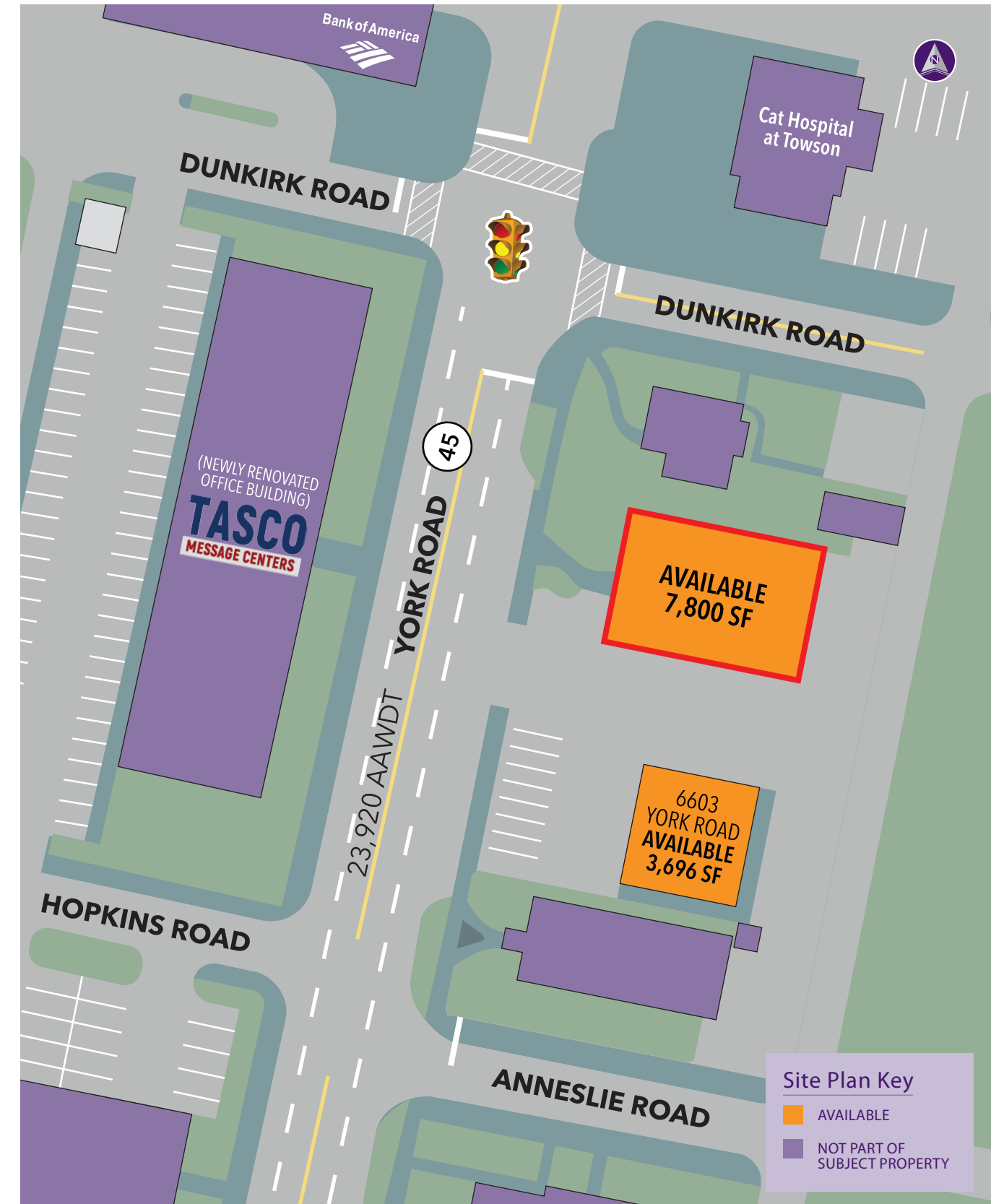
**6607
YORK ROAD**

7,800 SF office
building available

- Free standing building fronting York Road
- 2 level building with fully developed infrastructure
- 16 Parking spaces
- RO Zoning
- Vehicle access direct from York Road
- Front and rear entrances to building
- In Anneslie submarket



6901 • 6705 • 6607 • 6603
YORK ROAD



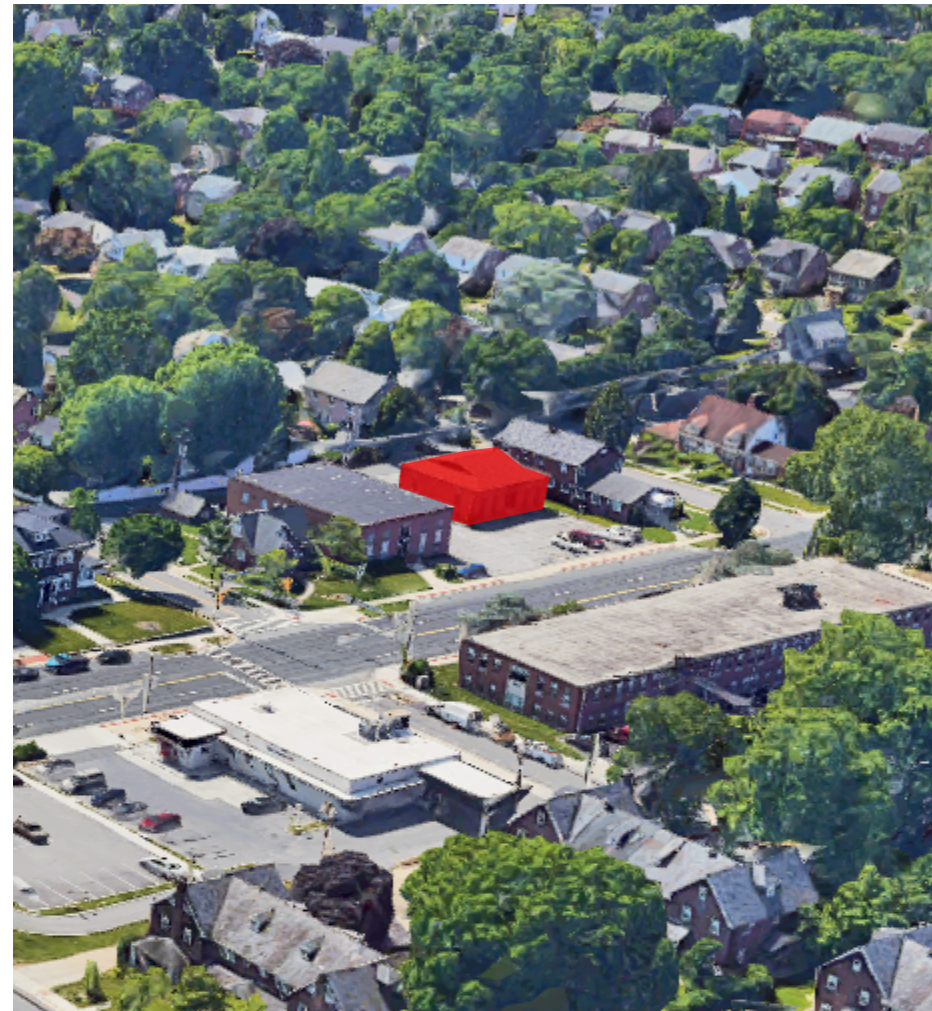
THE STONELEIGH WALK

BALTIMORE, MD

**6603
YORK ROAD**

**3,696 SF
available**

- Free standing building fronting York Road
- 2 level building with fully developed infrastructure
- RO Zoning
- Vehicle access direct from York Road via easement
- Access from York Road via easement
- In Anneslie submarket



6901 • 6705 • 6607 • 6603
YORK ROAD

