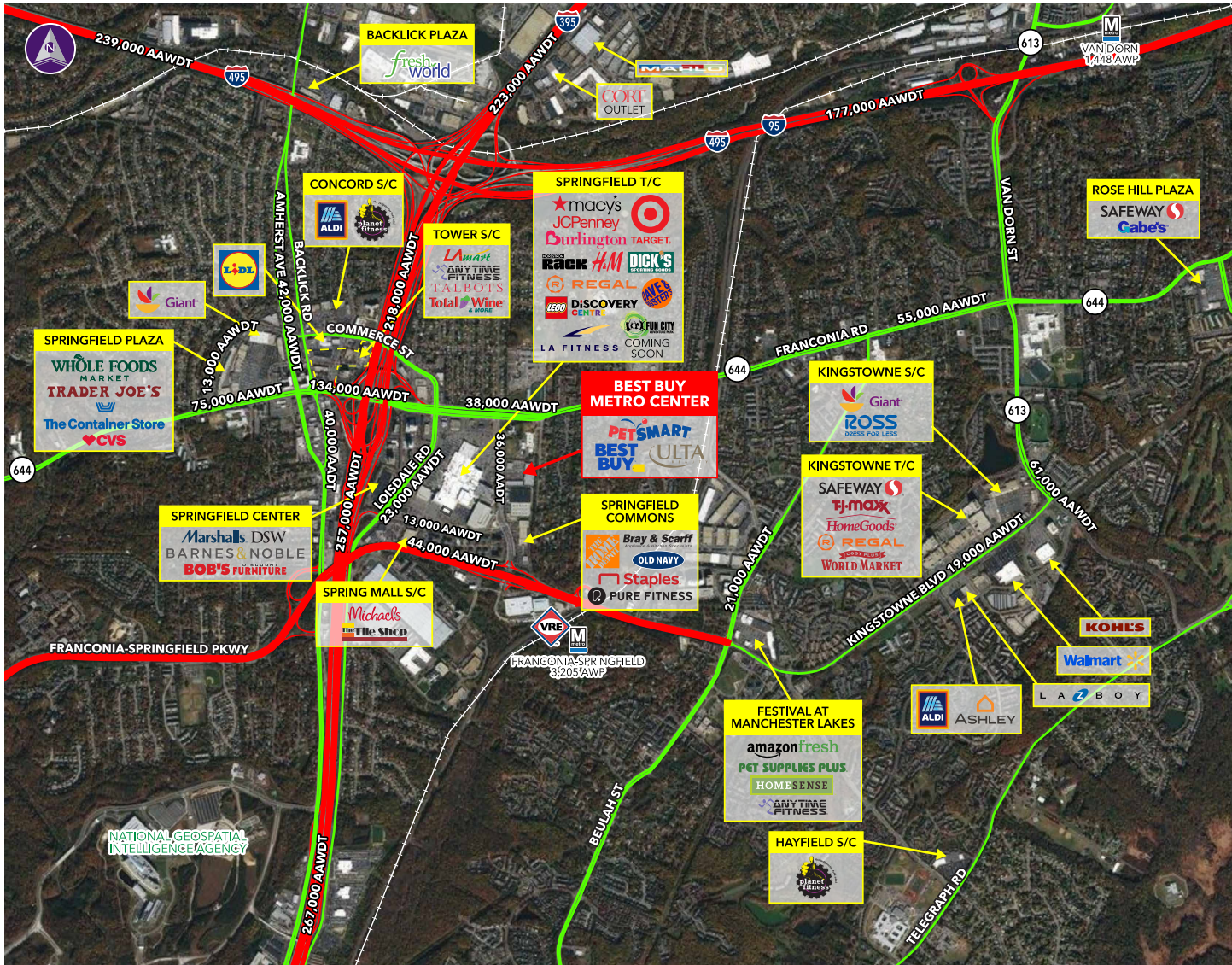


BEST BUY METRO CENTER ■ SPRINGFIELD, VA



Information herein has been obtained from sources believed to be reliable. While we do not doubt its accuracy, we have not verified it and make no guarantee, warranty or representation about it. Independent confirmation of its accuracy and completeness is your responsibility. H&R Retail, Inc.

■ Best Buy Metro Center
6525-6575 FRONTIER DRIVE | SPRINGFIELD, VA 22150
1,237 - 1,346 SF AVAILABLE



Property Highlights

- Franconia Road (VA Route 644) has traffic counts of 38,000 AAWDT and Frontier Drive has 36,000 AAWDT (Average Annual Weekday Traffic)
- Highly visible center located on Franconia Road (VA Route 644)
- Access to the recently completed Springfield Interchange highway project, connecting I-95, I-395 and I-495, having 218,000 AAWDT (Average Annual Weekday Traffic)

Demographics (2024 Estimated)

	1 Mile	3 Mile	5 Mile
Population	9,567	109,856	359,261
Average HH Income	\$171,553	\$181,151	\$166,075
Daytime Population	17,500	104,423	308,183

Please Contact

Bradley Buslik 240.482.3609 (direct) 301.656.3030 (office) bbuslik@hrretail.com	Sebastian Restifo 240.482.3602 (direct) 301.656.3030 (office) srestifo@hrretail.com
---	---

BEST BUY METRO CENTER ■ SPRINGFIELD, VA

#	TENANTS	SIZE
6555D	Best Buy	45,875
6535B	PetSmart	23,596
6525A	Bertucci's	6,324
6525B	Starbucks	1,596
6525C	Dental	2,178
6575A	Ulta	12,000
6575K	AVAILABLE (Do not disturb)	1,346
6575L	Great Wall Restaurant	1,000
6575M	AVAILABLE (Do not disurb)	1,237
6575N-0	LensCrafters	3,717
6575Q	Nail Salon	1,237
6575S-T	5.11 Tactical	5,207
TOTAL		105,237 SF

