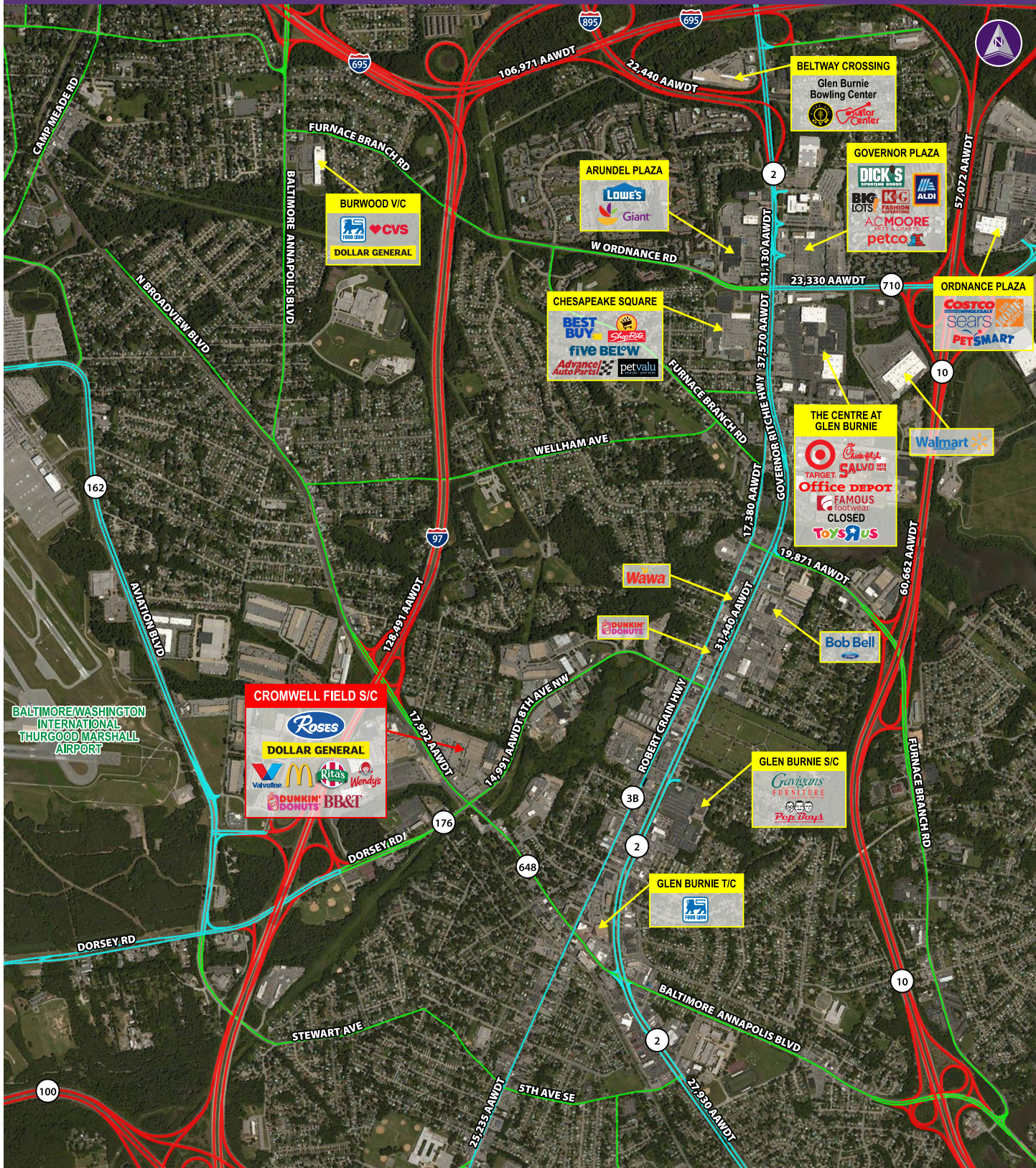


CROMWELL FIELD SHOPPING CENTER ■ GLEN BURNIE, MD



Information herein has been obtained from sources believed to be reliable. While we do not doubt its accuracy, we have not verified it and make no guarantee, warranty or representation about it. Independent confirmation of its accuracy and completeness is your responsibility. H&R Retail, Inc.

Cromwell Field Shopping Center

7383 BALTIMORE ANNAPOLIS BOULEVARD | GLEN BURNIE, MD 21061

52,706 Available for Sublease, Former Giant Food



Property Highlights

- Strong demographics
- Captive trade area
- Pylon signage available

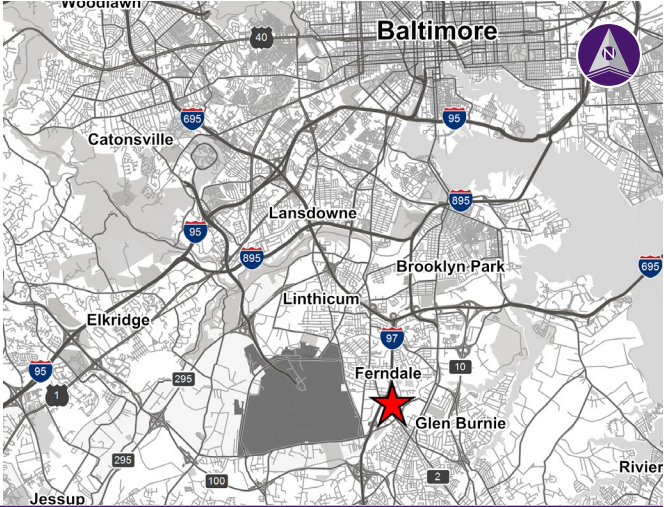


Please Contact

**James P. Crilley**  
240.482.3605 (direct)  
301.656.3030 (office)  
jcrilley@hrretail.com

Demographics (2018 Estimated)

	1 Mile	3 Mile	5 Mile
Population	8,669	85,295	191,328
Average HH Income	\$82,549	\$82,545	\$86,508
Daytime Population	9,059	58,385	107,819





CROMWELL FIELD SHOPPING CENTER ■ GLEN BURNIE, MD

