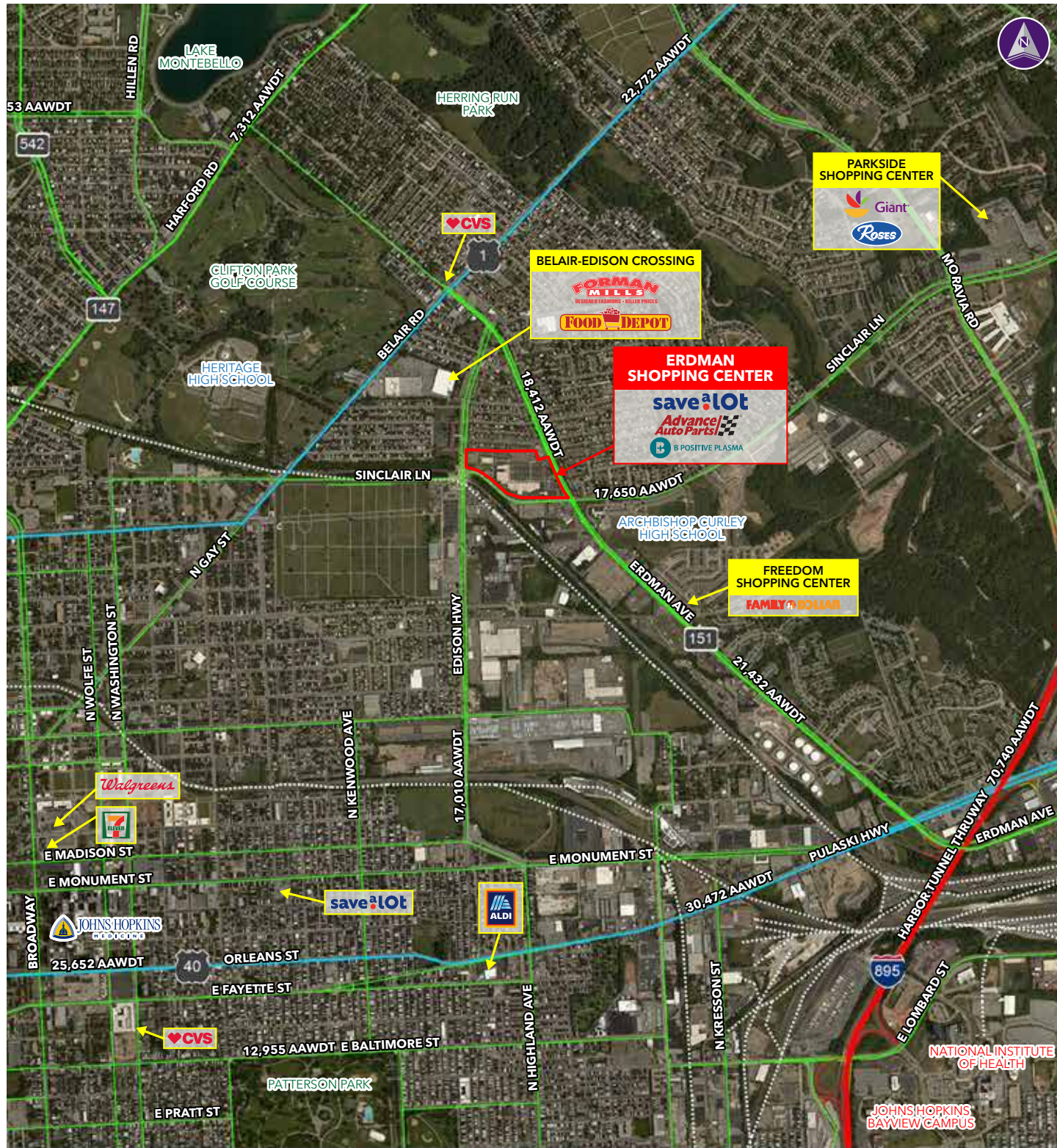


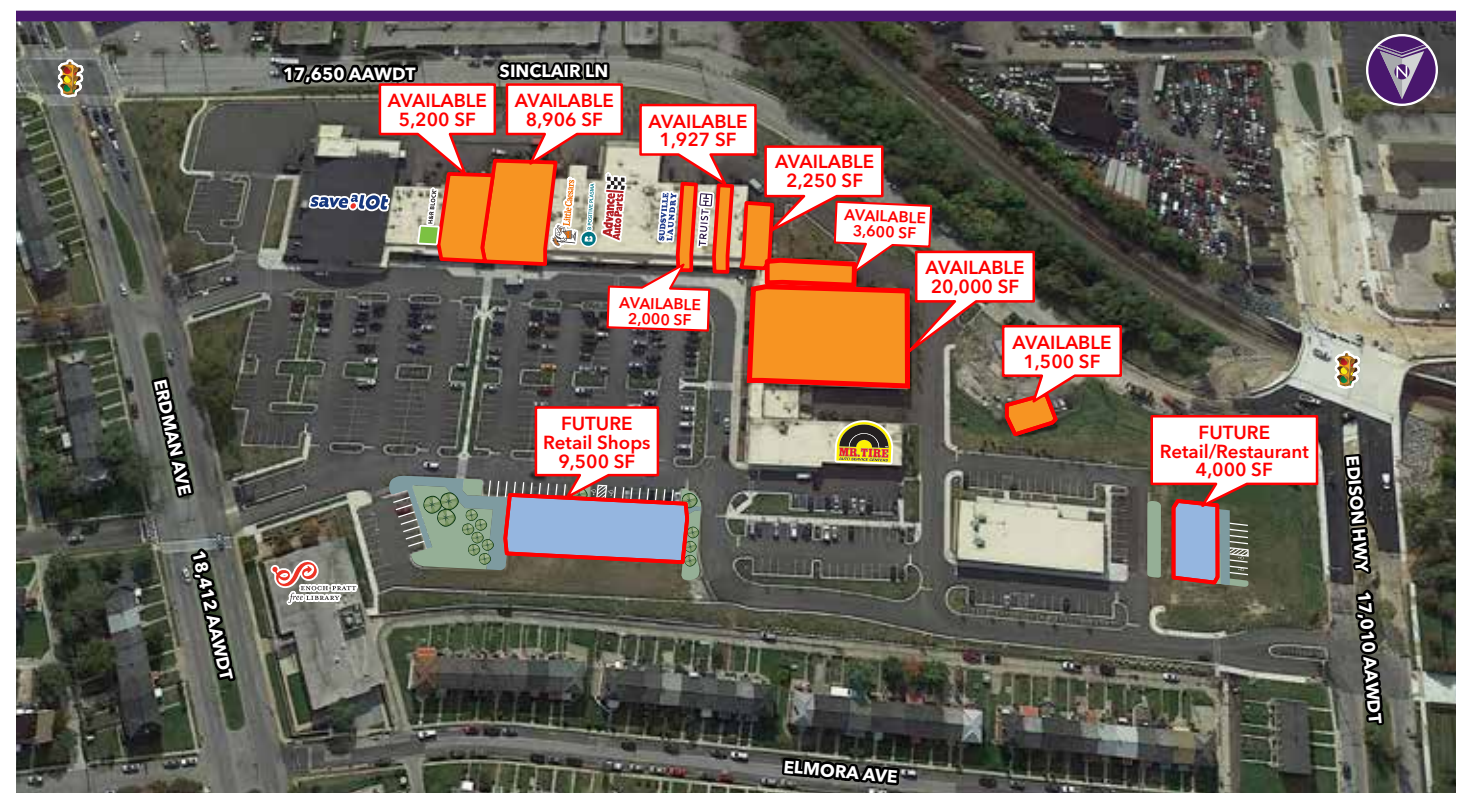
ERDMAN SHOPPING CENTER ■ BALTIMORE, MD



Erdman Shopping Center

3833 ERDMAN AVENUE | BALTIMORE, MD 21213

20,000 SF ANCHOR SPACE AVAILABLE



Property Highlights

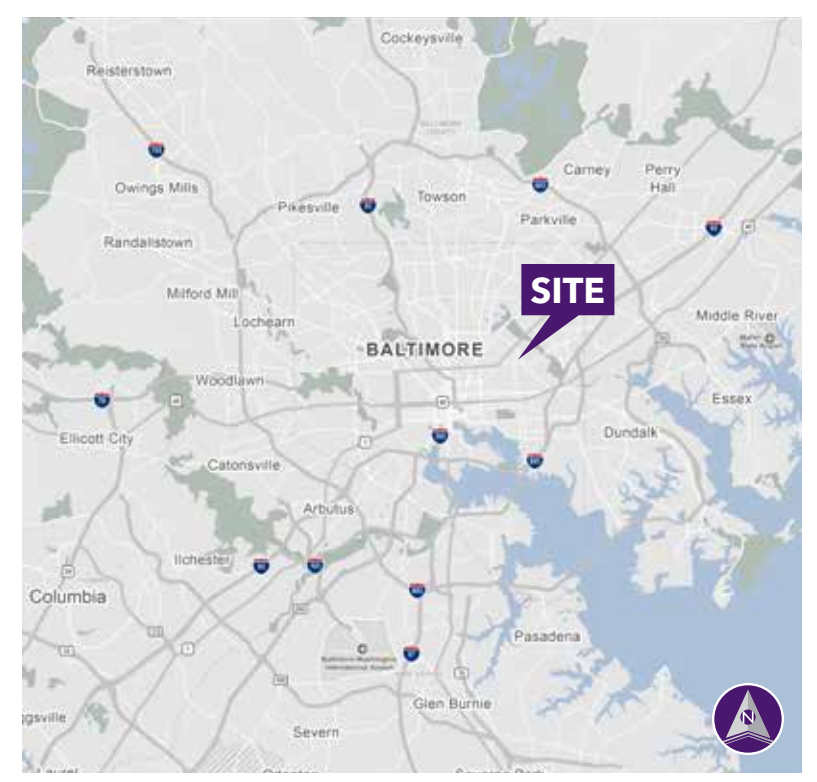
- Located at the intersection of Erdman Avenue and Sinclair Lane
- GLA: 110,901 SF
- Join Save-a-Lot, Advance Auto Parts, B Positive and Injury Treatment Center of Maryland

Demographics (2024 Estimated)

	1 Mile	3 Mile	5 Mile
Population	25,255	240,296	509,768
Average HH Income	\$62,713	\$94,572	\$99,642
Daytime Population	18,689	304,867	593,189

Please Contact

Lawrence Hoffman 240.482.3610 (direct) 301.656.3030 (office) lhoffman@hrretail.com	Brian Mitchell 240.482.3604 (direct) 301.656.3030 (office) bmitchell@hrretail.com
--	---



Information herein has been obtained from sources believed to be reliable. While we do not doubt its accuracy, we have not verified it and make no guarantee, warranty or representation about it. Independent confirmation of its accuracy and completeness is your responsibility. H&R Retail, Inc.

ERDMAN SHOPPING CENTER ■ BALTIMORE, MD

