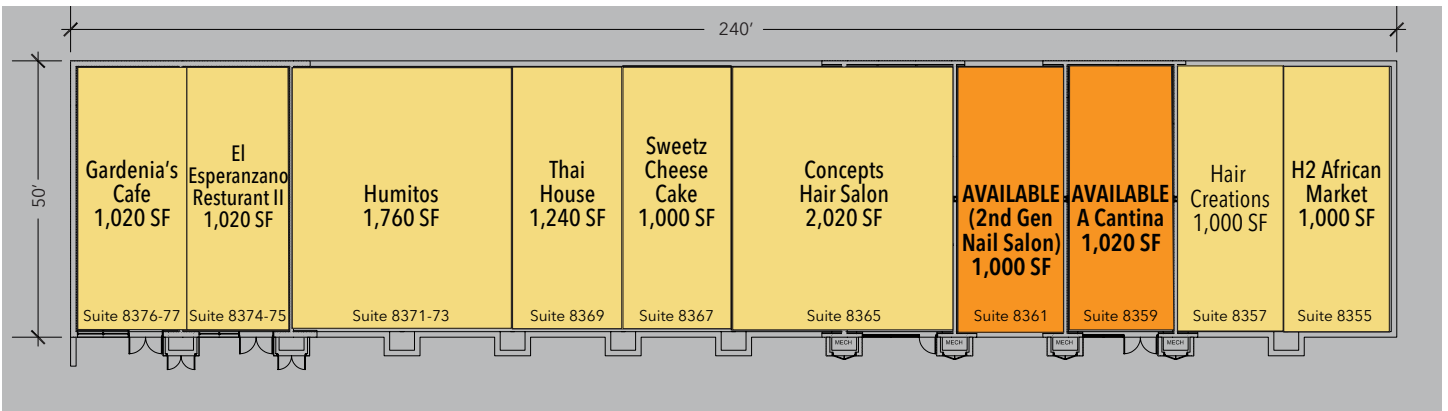




# Airpark Place

8363 SNOUFFER SCHOOL ROAD | GAITHERSBURG, MD 20879

**1,000 SF - 1,020 SF SPACES AVAILABLE**



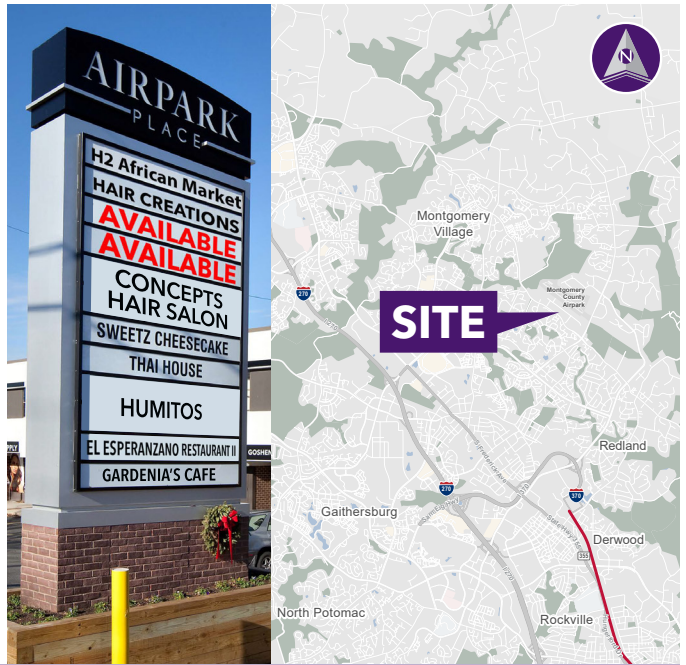
- ### Property Highlights
- Strong daytime population within the trade area (235,900+ people)
  - Great visibility along Snouffer School Rd (21,462 AAWDT)
  - New pylon signage available
  - Ample parking

### Demographics (2025 Estimated)

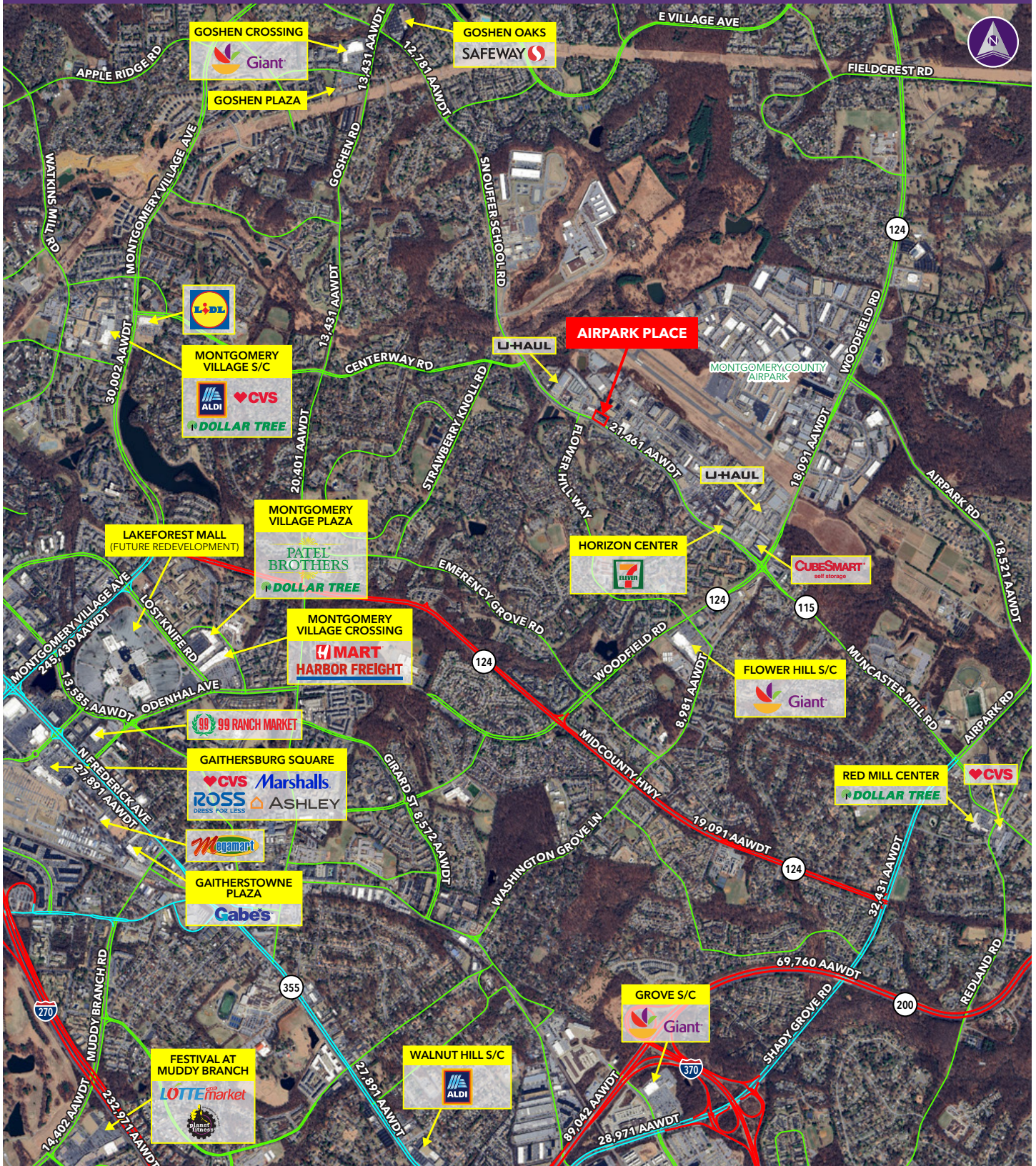
	1 Mile	3 Mile	5 Mile
Population	13,341	110,504	226,078
Average HH Income	\$135,697	\$138,085	\$151,143

### Please contact

<b>Bradley Buslik</b> 240.482.3609 (direct) 301.656.3030 (office) bbuslik@hrretail.com	<b>Austin Hersh</b> 240.482.3613 (direct) 301.656.3030 (office) ahersh@hrretail.com	<b>Pete Barnard</b> 240.616.9901 (direct) 301.656.3030 (office) pbarnard@hrretail.com
---	--	--



# AIRPARK PLACE ■ GAITHERSBURG, MD



Information herein has been obtained from sources believed to be reliable. While we do not doubt its accuracy, we have not verified it and make no guarantee, warranty or representation about it. Independent confirmation of its accuracy and completeness is your responsibility. H&R Retail, Inc.