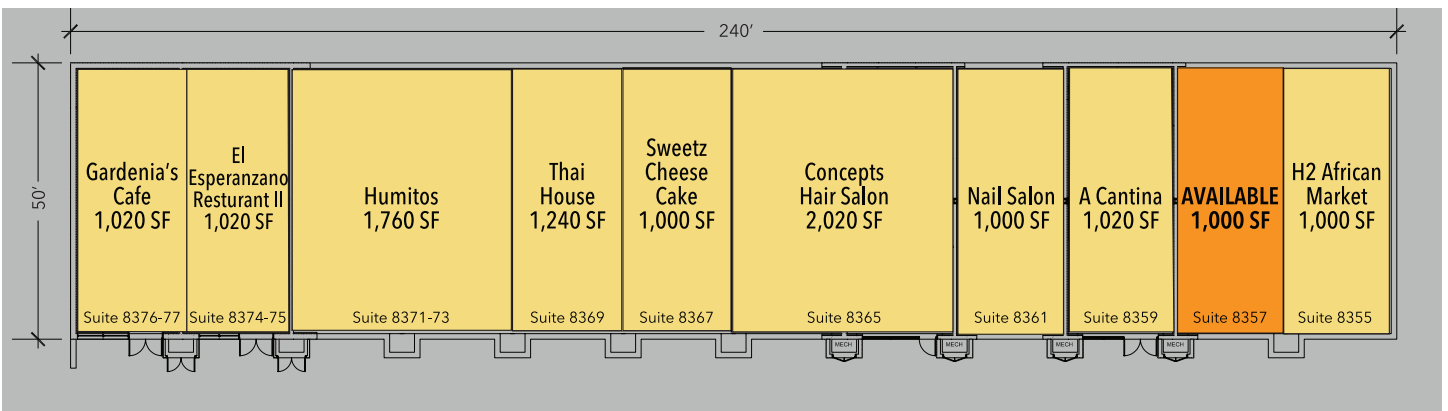




Airpark Place

8363 SNOUFFER SCHOOL ROAD | GAITHERSBURG, MD 20879

1,000 SF AVAILABLE



Property Highlights

- Strong daytime population of 224,925 people within the trade area
- Great visibility along Snouffer School Road (23,485 AAWDT)
- New pylon
- Ample parking

Demographics (2024 Estimated)

| | 1 Mile | 3 Mile | 5 Mile |
|-------------------|-----------|-----------|-----------|
| Population | 13,377 | 110,126 | 224,925 |
| Average HH Income | \$137,994 | \$138,397 | \$154,607 |

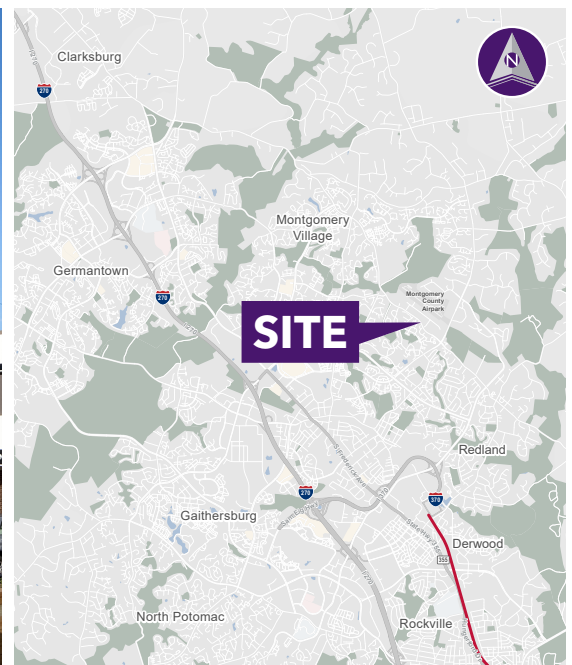
Please Contact

Bradley Buslik

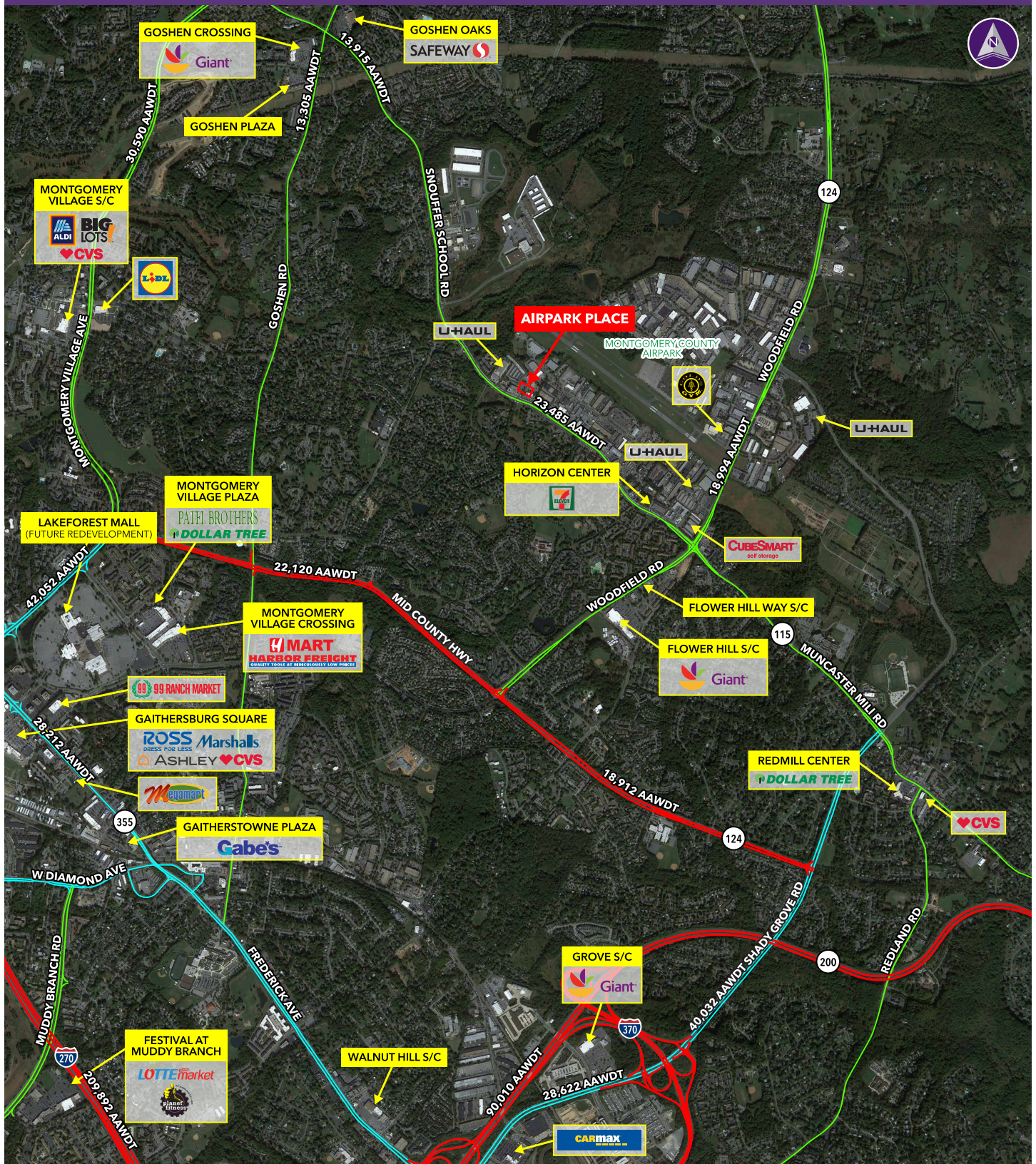
240.482.3609 (direct)
301.656.3030 (office)
bbuslik@hrretail.com

Austin Hersh

240.482.3613 (direct)
301.656.3030 (office)
ahersh@hrretail.com



AIRPARK PLACE ■ GAITHERSBURG, MD



Information herein has been obtained from sources believed to be reliable. While we do not doubt its accuracy, we have not verified it and make no guarantee, warranty or representation about it. Independent confirmation of its accuracy and completeness is your responsibility. H&R Retail, Inc.