

THE METROPOLITAN | M.FLATS | 10M. ■ COLUMBIA, MD



Information herein has been obtained from sources believed to be reliable. While we do not doubt its accuracy, we have not verified it and make no guarantee, warranty or representation about it. Independent confirmation of its accuracy and completeness is your responsibility. H&R Retail, Inc.

■ The Metropolitan | m.flats | 10.M
COLUMBIA, MD 21044
FULLY LEASED

m.flats & T.E.N.M



THE
METROPOLITAN
DOWNTOWN COLUMBIA

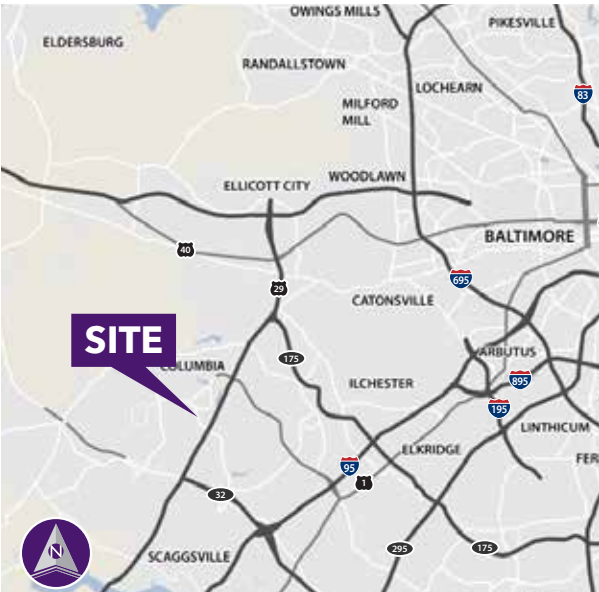


Property Highlights

- New development located in Downtown Columbia totaling 43,000 total square feet, 817 residential units and 432 dedicated retail parking spaces.
- Part of the Downtown Columbia Plan, which includes nearly 14 million square feet of development: 4.3 million square feet of office space, 1.25 million square feet of retail, 650 hotel rooms, and more than 6,200 residential units.
- Sits across from The Mall in Columbia totaling 1,434,076 sf and anchored by Nordstrom, JC Penney and Macy's.
- Join:



in the already constructed Metropolitan building.



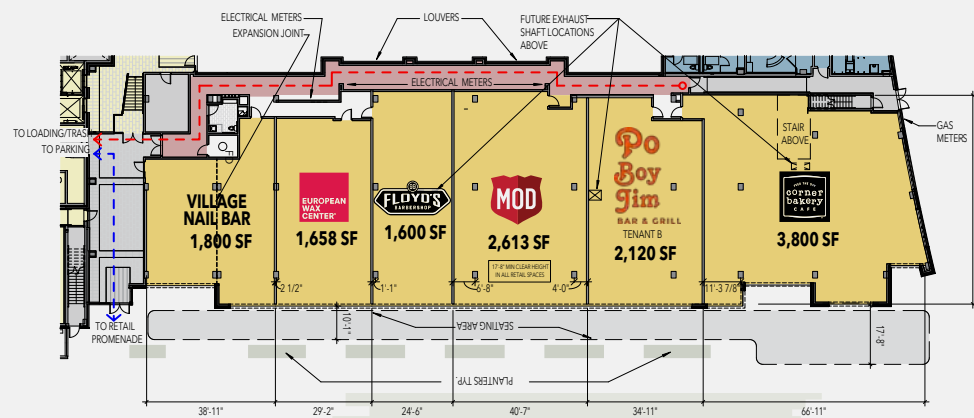
Please Contact

Ray Schupp	Sean Harcourt	Suzanne Katz
240.482.3611 (direct)	240.482.3606 (direct)	410.308.6356 (direct)
301.656.3030 (office)	301.656.3030 (office)	410.308.0800 (office)
rschupp@hrretail.com	sean@hrretail.com	skatz@hrretail.com

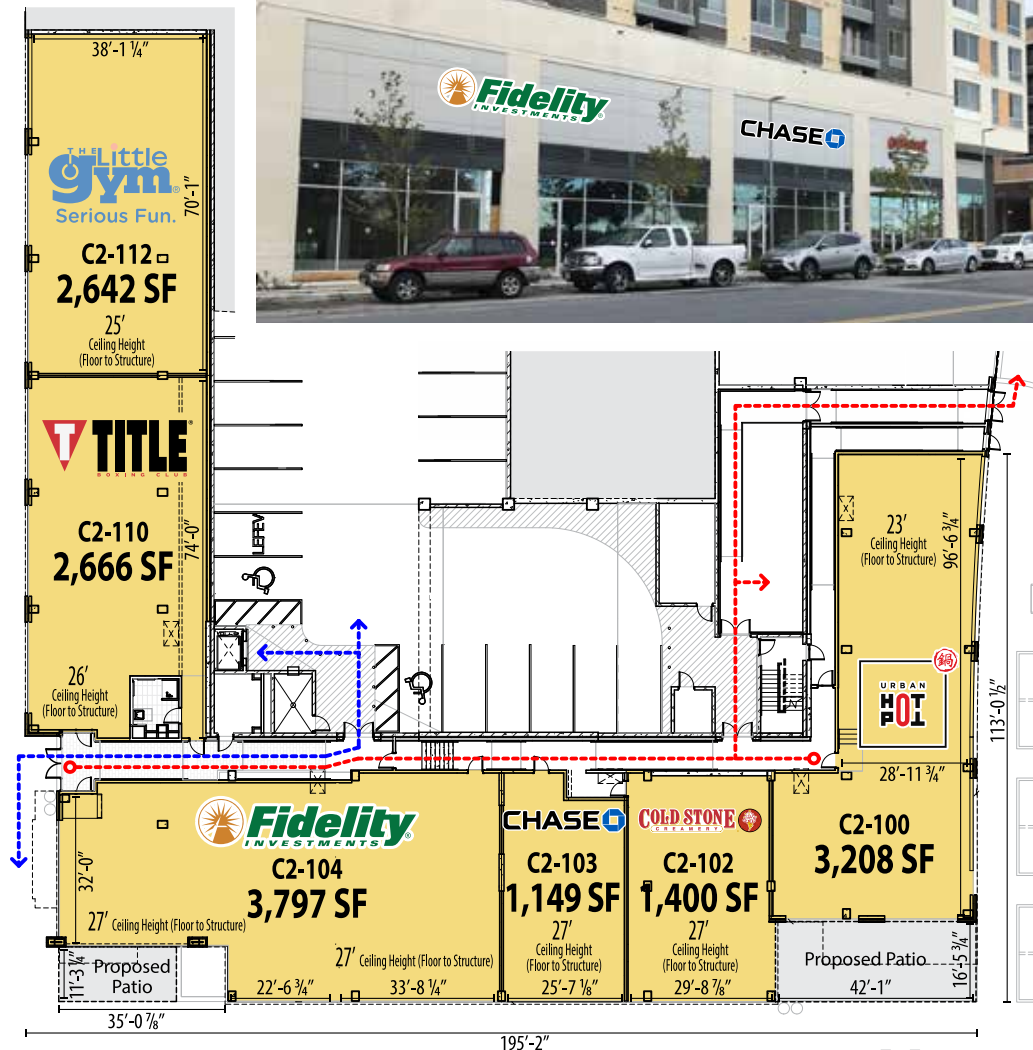
Demographics (2021 Estimated)

	1 Mile	3 Mile	5 Mile
Population	17,280	86,272	182,338
Average HH Income	\$90,308	\$104,663	\$117,279
Daytime Population	22,331	90,276	191,176

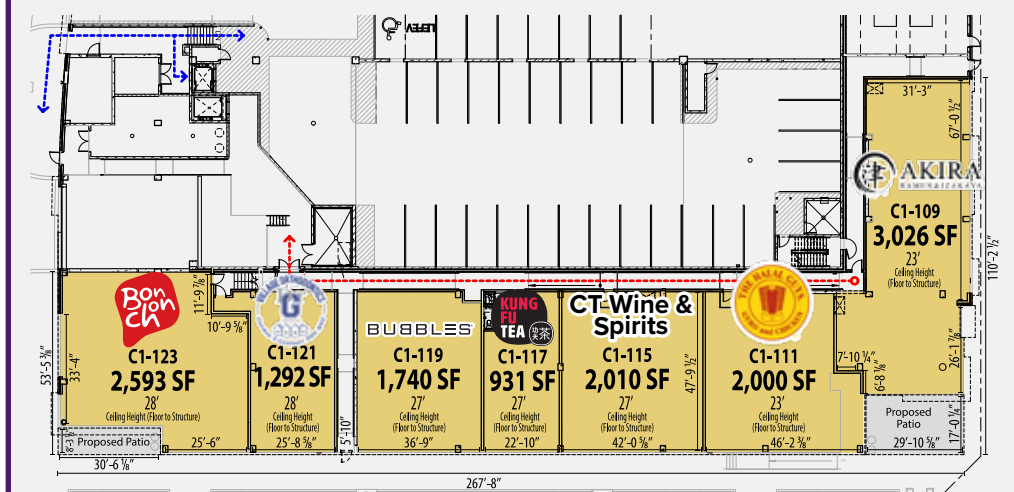
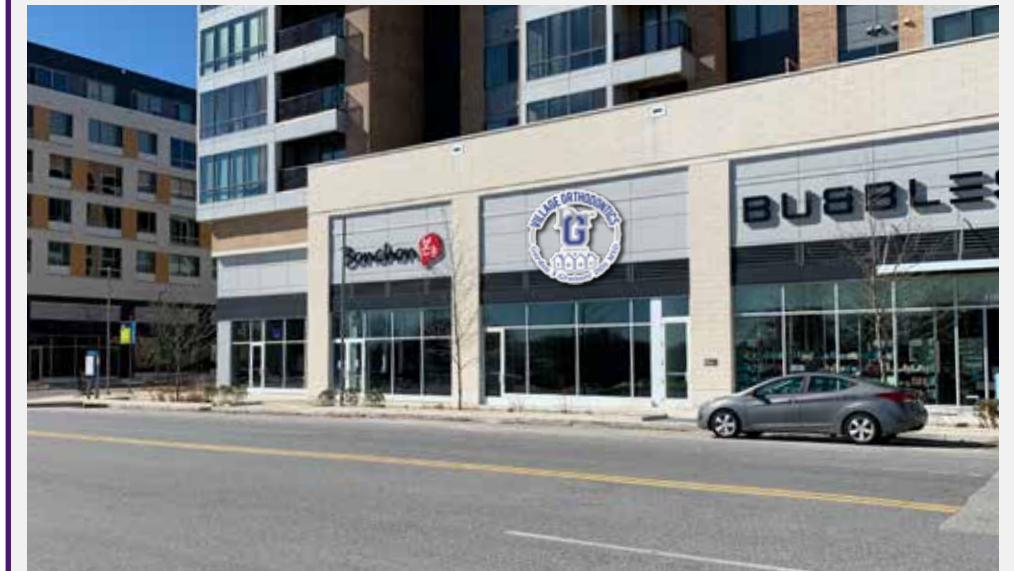
THE METROPOLITAN | M.FLATS | 10M. ■ COLUMBIA, MD



m.flats
Downtown Columbia



TEN.M



AVAILABLE AT LEASE LEASED LOADING ROUTE CUSTOMER ROUTE